

## TSSC1 Recombinant Protein

**CATALOG NO.:** XW-RP3275

**BACKGROUND:**

This gene has been reported in PMID 9403053 as one of several tumor-suppressing subtransferable fragments located in the imprinted gene domain of 11p15.5, an important tumor-suppressor gene region. Alterations in this region have been associated with the Beckwith-Wiedemann syndrome, Wilms tumor, rhabdomyosarcoma, adrenocortical carcinoma, and lung, ovarian, and breast cancer. Alignment of this gene to genomic sequence data suggests that this gene may reside on chromosome 2 rather than chromosome 11.

**SOURCE:** E. coli

**PURITY:** 90%

**BUFFER:** 10 mM Tris, pH 8.0, 0.1% Triton X-100, 0.002% NaN<sub>3</sub>

**FUSION PARTNER:** T7 tag at N-terminus

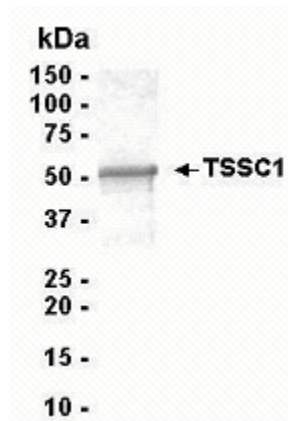
**DOMAIN:** aa. 1-387

**MOLECULAR WEIGHT:** 44.5 kDa (Calculated)

**PROTEIN GI #:** 4507703

**PROTEIN ACCESSION #:** NP\_003301

**TESTED APPLICATION:** WB,E,MS



**SDS PAGE:** Analysis of TSSC1 Recombinant Protein. 4-20% SDS gradient gel. Coomassie blue staining.

**STORAGE:** Store at -70°C. As with any protein, exposing TSSC1 recombinant protein to repeated freeze/thaw cycles is not recommended. When working with proteins care should be taken to keep recombinant protein at a cool and stable temperature.

During shipment, small volumes of TSSC1 recombinant protein will occasionally become entrapped in the seal of the product vial. For products with volumes of 200 µL or less, we recommend gently tapping the vial on a hard surface or briefly centrifuging the vial in a tabletop centrifuge to dislodge any liquid in the container's cap. **For research use only.**