

S100A14 Recombinant Protein

CATALOG NO.: XW-RP3239

BACKGROUND:

S100A14 is a member of a subfamily of proteins related by Ca(2+)-binding motifs to the EF-hand Ca(2+)-binding protein superfamily.

SOURCE: E. coli

PURITY: 95%

PREPERATION: 0.1mg/0.4ml

BUFFER: 10 mM Tris, pH 8.0, 0.1% Triton X-100, 0.002% NaN₃, 10mM DTT

FUSION PARTNER: T7 tag at N-terminus

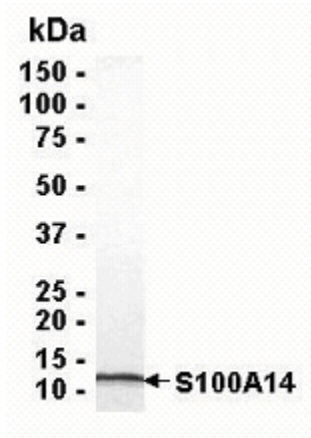
DOMAIN: aa. 1-104

MOLECULAR WEIGHT: 12 kDa (Calculated)

PROTEIN GI #: 10190712

PROTEIN ACCESSION #: NP_065723

TESTED APPLICATION: WB,E,MS



SDS PAGE: Analysis of S100A14 Recombinant Protein. 4-20% SDS gradient gel. Coomassie blue staining.

STORAGE: Store at -70°C. As with any protein, exposing S100A14 recombinant protein to repeated freeze/thaw cycles is not recommended. When working with proteins care should be taken to keep recombinant protein at a cool and stable temperature.

During shipment, small volumes of S100A14 recombinant protein will occasionally become entrapped in the seal of the product vial. For products with volumes of 200 µL or less, we recommend gently tapping the vial on a hard surface or briefly centrifuging the vial in a tabletop centrifuge to dislodge any liquid in the container's cap. **For research use only.**