

RAB10 Recombinant Protein

CATALOG NO.: XW-RP3217

BACKGROUND:

May be involved in vesicular trafficking and neurotransmitter release. Belongs to the small GTPase superfamily. Rab family.

SOURCE: E. coli

PURITY: 95%

BUFFER: 10 mM Tris, pH 8.0, 0.1% Triton X-100, 0.002% NaN₃, 10mM DTT

FUSION PARTNER: T7 tag at N-terminus

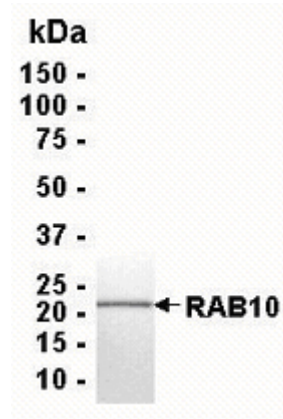
DOMAIN: aa. 1-200

MOLECULAR WEIGHT: 23 kDa (Calculated)

PROTEIN GI #: 33695095

PROTEIN ACCESSION #: NP_057215

TESTED APPLICATION: WB,E,MS



SDS PAGE: Analysis of RAB10 Recombinant Protein. 4-20% SDS gradient gel. Coomassie blue staining.

STORAGE: Store at -70°C. As with any protein, exposing RAB10 recombinant protein to repeated freeze/thaw cycles is not recommended. When working with proteins care should be taken to keep recombinant protein at a cool and stable temperature.

During shipment, small volumes of RAB10 recombinant protein will occasionally become entrapped in the seal of the product vial. For products with volumes of 200 μ L or less, we recommend gently tapping the vial on a hard surface or briefly centrifuging the vial in a tabletop centrifuge to dislodge any liquid in the container's cap. **For research use only.**