

## MTHFD2 Recombinant Protein

**CATALOG NO.:** XW-RP3155

**BACKGROUND:**

This is a nuclear-encoded mitochondrial bifunctional enzyme with methylenetetrahydrofolate dehydrogenase and methenyltetrahydrofolate cyclohydrolase activities. The enzyme functions as a homodimer and is unique in its absolute requirement for magnesium and inorganic phosphate. Formation of the enzyme-magnesium complex allows binding of NAD.

**SOURCE:** E. coli

**PURITY:** >95%

**BUFFER:** 10 mM Tris, pH 8.0, 0.1% Triton X-100, 0.002% NaN<sub>3</sub>

**FUSION PARTNER:** T7 tag at N-terminus

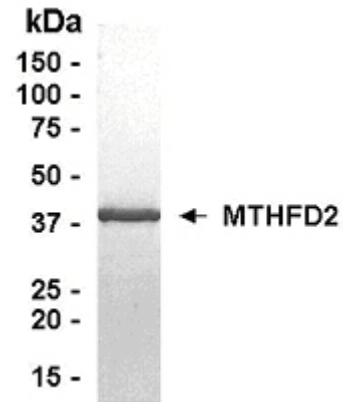
**DOMAIN:** aa. 1-344

**MOLECULAR WEIGHT:** 39.56 kDa (Calculated)

**PROTEIN GI #:** 5729935

**PROTEIN ACCESSION #:** NP\_006627

**TESTED APPLICATION:** WB,E,MS



**SDS PAGE:** Analysis of MTHFD2 Recombinant Protein. 4-20% SDS gradient gel. Coomassie blue staining.

**STORAGE:** Store at -70°C. As with any protein, exposing MTHFD2 recombinant protein to repeated freeze/thaw cycles is not recommended. When working with proteins care should be taken to keep recombinant protein at a cool and stable temperature.

During shipment, small volumes of MTHFD2 recombinant protein will occasionally become entrapped in the seal of the product vial. For products with volumes of 200 µL or less, we recommend gently tapping the vial on a hard surface or briefly centrifuging the vial in a tabletop centrifuge to dislodge any liquid in the container's cap. **For research use only.**