

## LXN Recombinant Protein

**CATALOG NO.:** XW-RP3139

**BACKGROUND:**

Strongly similar to rat latexin (TCI, Rn.11404); may be a tissue carboxypeptidase inhibitor.

**SOURCE:** E. coli

**PURITY:** 95%

**BUFFER:** 10 mM Tris, pH 8.0, 0.1% Triton X-100, 0.002% NaN<sub>3</sub>

**FUSION PARTNER:** T7 tag at N-terminus

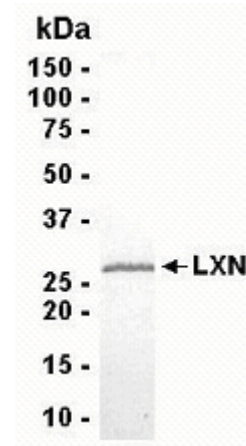
**DOMAIN:** aa. 1-222

**MOLECULAR WEIGHT:** 25.5 kDa (Calculated)

**PROTEIN GI #:** 21359933

**PROTEIN ACCESSION #:** NP\_064554

**TESTED APPLICATION:** WB,E,MS



**SDS PAGE:** Analysis of LXN Recombinant Protein. 4-20% SDS gradient gel. Coomassie blue staining.

**STORAGE:** Store at -70°C. As with any protein, exposing LXN recombinant protein to repeated freeze/thaw cycles is not recommended. When working with proteins care should be taken to keep recombinant protein at a cool and stable temperature.

During shipment, small volumes of LXN recombinant protein will occasionally become entrapped in the seal of the product vial. For products with volumes of 200 µL or less, we recommend gently tapping the vial on a hard surface or briefly centrifuging the vial in a tabletop centrifuge to dislodge any liquid in the container's cap. **For research use only.**