

XPOT Antibody

Exportin-T, tRNA exportin, Exportin(tRNA)

CATALOG NO.: XW-8158

BACKGROUND:

FUNCTION: Mediates nuclear export of all tRNAs.
SUBUNIT: Binds to GTP-bound form of Ran. **SIMILARITY:** Belongs to the exportin family. **SUBCELLULAR LOCATION:** Nuclear; once bound to tRNA and Ran the complex translocates to the cytoplasm.

TESTED APPLICATION:

WB

SPECIES REACTIVITY:

H

CLONALITY:

Polyclonal

HOST:

Chicken

IMMUNOGEN:

843-962

PROTEIN GI #:

8051636

PROTEIN ACCESSION #:

NP_009166.2

PURIFICATION:

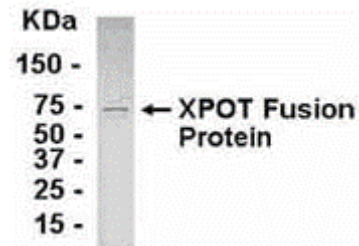
Immunoaffinity Purified

BUFFER:

Phosphate-Buffered Saline. No preservatives added.

APPLICATION:

Exportin-T IgY antibody can be used for the detection of Exportin-T by Western Blot.



E coli-derived fusion protein as test antigen. Affinity-purified IgY dilution: 1:2000, Goat anti-IgY-HRP dilution: 1:1000. Colorimetric method for signal development.

STORAGE:

This antibody can be stored at 4°C for short term (weeks). Long term storage should be at -20°C. As with all antibodies care should be taken to avoid repeated freeze thaw cycles. Antibodies should not be exposed to prolonged high temperatures.

USER NOTES:

When working with antibodies optimal dilutions/concentrations should be determined by the end user for each application. The information provided is a guideline for antibody use. As with all ProSci antibodies, this antibody is for research use only.