

ACTB Antibody

Non-muscle actin (b and g), b-actin

CATALOG NO.: XW-8148

BACKGROUND:

FUNCTION: Actins are highly conserved proteins that are involved in various types of cell motility and are ubiquitously expressed in all eukaryotic cells. **SUBUNIT:** Polymerization of globular actin (G-actin) leads to a structural filament (F-actin) in the form of a two-stranded helix. Each actin can bind to 4 others. **SIMILARITY:** Belongs to the actin family

TESTED APPLICATION:

WB

SPECIES REACTIVITY:

H,M,R,C,B,Rb,and many other species

CLONALITY:

Polyclonal

HOST:

Chicken

IMMUNOGEN:

1-375

PROTEIN GI #:

4501885

PROTEIN ACCESSION #:

NP_001092.1

PURIFICATION:

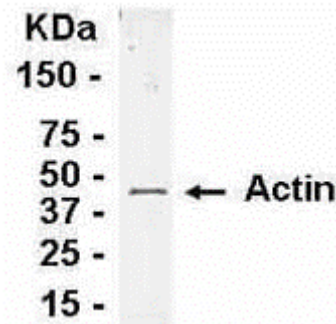
Immunoaffinity Purified

BUFFER:

Phosphate-Buffered Saline. No preservatives added.

APPLICATION:

Non-muscle actin (beta and gamma) IgY antibody can be used for the detection of Non-muscle actin (beta and gamma) by Western Blot.



Western Blot: 293 cell lysate as test antigen. Affinity-purified IgY dilution: 1:1000, Goat anti-IgY-HRP dilution: 1:1000. Colorimetric method for signal development.

STORAGE:

This antibody can be stored at 4°C for short term (weeks). Long term storage should be at -20°C. As with all antibodies care should be taken to avoid repeated freeze thaw cycles. Antibodies should not be exposed to prolonged high temperatures.

USER NOTES:

When working with antibodies optimal dilutions/concentrations should be determined by the end user for each application. The information provided is a guideline for antibody use. As with all ProSci antibodies, this antibody is for research use only.