

GGH Antibody

g-glutamyl hydrolase, *g*-Glu-X carboxypeptidase, Conjugase, GH

CATALOG NO.: XW-8143

BACKGROUND:

FUNCTION: Hydrolyzes the polyglutamate sidechains of pteroylpolyglutamates. Progressively removes gamma-glutamyl residues from pteroylpoly-gamma-glutamate to yield pteroyl-alpha-glutamate (folic acid) and free glutamate. May play an important role in the bioavailability of dietary pteroylpolyglutamates and in the metabolism of pteroylpolyglutamates and antifolates. **CATALYTIC ACTIVITY:** Hydrolysis of a gamma-glutamyl bond. **SIMILARITY:** Belongs to the peptidase C26 family.

TESTED APPLICATION:

WB

SPECIES REACTIVITY:

H,R,M

CLONALITY:

Polyclonal

HOST:

Chicken

IMMUNOGEN:

25-116

PROTEIN GI #:

4503987

PROTEIN ACCESSION #:

NP_003869.1

PURIFICATION:

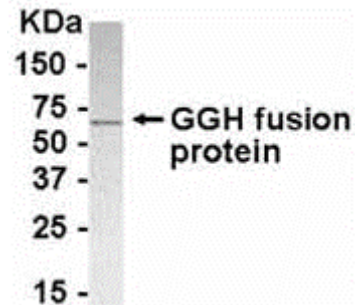
Immunoaffinity Purified

BUFFER:

Phosphate-Buffered Saline. No preservatives added.

APPLICATION:

gamma-glutamyl hydrolase IgY antibody can be used for the detection of gamma-glutamyl hydrolase by Western Blot.



E coli-derived fusion protein as test antigen. Affinity-

purified IgY dilution: 1:2000, Goat anti-IgY-HRP dilution:

1:1000. Colorimetric method for signal development.

STORAGE:

This antibody can be stored at 4°C for short term (weeks). Long term storage should be at -20°C. As with all antibodies care should be taken to avoid repeated freeze thaw cycles. Antibodies should not be exposed to prolonged high temperatures.

USER NOTES:

When working with antibodies optimal dilutions/concentrations should be determined by the end user for each application. The information provided is a guideline for antibody use. As with all ProSci antibodies, this antibody is for research use only.