

TXLNA Antibody

α-taxilin

CATALOG NO.: XW-8134

BACKGROUND:

FUNCTION: May be involved in intracellular vesicle traffic and potentially in calcium-dependent exocytosis in neuroendocrine cells. **SUBUNIT:** Binds to the C-terminal coiled coil region of syntaxin family members STX1A, STX3A and STX4A, but not when these proteins are complexed with SNAP25, VAMP2 or STXBP1, suggesting that it interacts with syntaxins that do not form the SNARE complex.

TESTED APPLICATION:

WB

SPECIES REACTIVITY:

H,D,Chm

CLONALITY:

Polyclonal

HOST:

Chicken

IMMUNOGEN:

409-539

PROTEIN GI #:

28460688

PROTEIN ACCESSION #:

NP_787048.1

PURIFICATION:

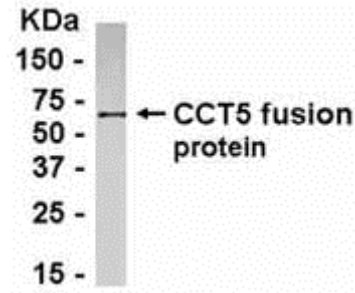
Immunoaffinity Purified

BUFFER:

Phosphate-Buffered Saline. No preservatives added.

APPLICATION:

α-taxilin IgY antibody can be used for the detection of α-taxilin by Western Blot.



E coli-derived fusion protein as test antigen. Affinity-purified IgY dilution: 1:2000, Goat anti-IgY-HRP dilution: 1:1000. Colorimetric method for signal development.

STORAGE:

This antibody can be stored at 4°C for short term (weeks). Long term storage should be at -20°C. As with all antibodies care should be taken to avoid repeated freeze thaw cycles. Antibodies should not be exposed to prolonged high temperatures.

USER NOTES:

When working with antibodies optimal dilutions/concentrations should be determined by the end user for each application. The information provided is a guideline for antibody use. As with all ProSci antibodies, this antibody is for research use only.