

S100A6 Antibody

Calcyclin, Prolactin receptor associated protein

CATALOG NO.: XW-8092

BACKGROUND:

SUBUNIT: Homodimer, antiparallel. Interacts with SUGT1.
PTM: The N-terminus is blocked. SIMILARITY: Contains 2 EF-hand domains. INDUCTION: Preferentially expressed when quiescent fibroblasts are stimulated to proliferate. It is inducible by growth factors and overexpressed in acute myeloid leukemias. MISCELLANEOUS: This protein co-purified with the prolactin receptor.

TESTED APPLICATION:

WB

SPECIES REACTIVITY:

H,M,R

CLONALITY:

Polyclonal

HOST:

Chicken

IMMUNOGEN:

31412

PROTEIN GI #:

7657532

PROTEIN ACCESSION #:

NP_055439.1

PURIFICATION:

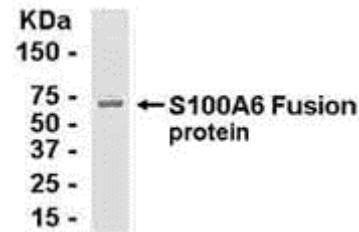
Immunoaffinity Purified

BUFFER:

Phosphate-Buffered Saline. No preservatives added.

APPLICATION:

Calcyclin IgY antibody can be used for the detection of Calcyclin by Western Blot.



E coli-derived fusion protein as test antigen. Affinity-purified IgY dilution: 1:2000, Goat anti-IgY-HRP dilution: 1:1000. Colorimetric method for signal development.

STORAGE:

This antibody can be stored at 4°C for short term (weeks). Long term storage should be at -20°C. As with all antibodies care should be taken to avoid repeated freeze thaw cycles. Antibodies should not be exposed to prolonged high temperatures.

USER NOTES:

When working with antibodies optimal dilutions/concentrations should be determined by the end user for each application. The information provided is a guideline for antibody use. As with all ProSci antibodies, this antibody is for research use only.