

RAB13 Antibody

Ras-related protein Rab-13,

CATALOG NO.: XW-8086

BACKGROUND:

FUNCTION: Could participate in polarized transport, in the assembly and/or the activity of tight junctions. **SIMILARITY:** Belongs to the small GTPase superfamily. Rab family. **SUBCELLULAR LOCATION:** Cytoplasmic tight junctions or associated with vesicles scattered throughout the cytoplasm in cells lacking tight junctions. **TISSUE SPECIFICITY:** Detected in several types of epithelia, including intestine, kidney, liver and in endothelial cells.

TESTED APPLICATION:

WB

SPECIES REACTIVITY:

H,M,R

CLONALITY:

Polyclonal

HOST:

Chicken

IMMUNOGEN:

1-203

PROTEIN GI #:

4506363

PROTEIN ACCESSION #:

NP_002861.1

PURIFICATION:

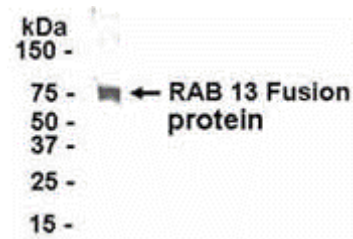
Immunoaffinity Purified

BUFFER:

Phosphate-Buffered Saline. No preservatives added.

APPLICATION:

Ras-related protein Rab-13 IgY antibody can be used for the detection of Ras-related protein Rab-13 by Western Blot.



E coli-derived fusion protein as test antigen. Affinity-purified IgY dilution: 1:2000, Goat anti-IgY-HRP dilution: 1:1000. Colorimetric method for signal development.

STORAGE:

This antibody can be stored at 4°C for short term (weeks). Long term storage should be at -20°C. As with all antibodies care should be taken to avoid repeated freeze thaw cycles. Antibodies should not be exposed to prolonged high temperatures.

USER NOTES:

When working with antibodies optimal dilutions/concentrations should be determined by the end user for each application. The information provided is a guideline for antibody use. As with all ProSci antibodies, this antibody is for research use only.