

## GCA Antibody

*Grancalcin,*

**CATALOG NO.:** XW-8063

**BACKGROUND:**

**FUNCTION:** May play a role in granule-membrane fusion and degranulation. **SUBUNIT:** Homodimer. **SIMILARITY:** Contains 3 EF-hand domains. **SUBCELLULAR LOCATION:** 50% cytoplasmic, the remainder being attached to the membranes and granules. **MISCELLANEOUS:** This protein has been shown to bind calcium with high affinity.

**TESTED APPLICATION:**

WB

**SPECIES REACTIVITY:**

H

**CLONALITY:**

Polyclonal

**HOST:**

Chicken

**IMMUNOGEN:**

1-217

**PROTEIN GI #:**

1170014

**PROTEIN ACCESSION #:**

P28676

**PURIFICATION:**

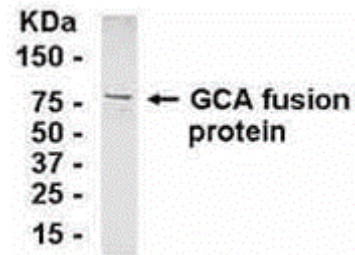
Immunoaffinity Purified

**BUFFER:**

Phosphate-Buffered Saline. No preservatives added.

**APPLICATION:**

Grancalcin IgY antibody can be used for the detection of Grancalcin by Western Blot.



E coli-derived fusion protein as test antigen. Affinity-purified IgY dilution: 1:2000, Goat anti-IgY-HRP dilution: 1:1000. Colorimetric method for signal development.

**STORAGE:**

This antibody can be stored at 4°C for short term (weeks). Long term storage should be at -20°C. As with all antibodies care should be taken to avoid repeated freeze thaw cycles. Antibodies should not be exposed to prolonged high temperatures.

**USER NOTES:**

When working with antibodies optimal dilutions/concentrations should be determined by the end user for each application. The information provided is a guideline for antibody use. As with all ProSci antibodies, this antibody is for research use only.