

DLX5 Antibody

Homeobox protein DLX-5

CATALOG NO.: XW-8051

BACKGROUND:

SUBUNIT: Interacts with G22P1 (Ku70). **SIMILARITY:** Contains 1 homeobox DNA-binding domain. **SUBCELLULAR LOCATION:** Nuclear (Potential). **DEVELOPMENTAL STAGE:** First expressed in embryos at 8.5-9 days in facial and branchial arch mesenchyme, otic vesicles and frontonasal ectoderm around olfactory placodes, a day later expression is seen in the developing forebrain in primordia of the ganglionic eminence and ventral diencephalic regions. In day 12.5 embryos, expressed in the brain and bones, and also in all skeletal structures of midgestation embryos after the first cartilage formation. Expression remains unaltered in both brain and skeleton in day 15 embryos and slowly decreases in day 17 embryos.

TESTED APPLICATION:

WB

SPECIES REACTIVITY:

H,M,R

CLONALITY:

Polyclonal

HOST:

Chicken

IMMUNOGEN:

1-120

PROTEIN GI #:

4885187

PROTEIN ACCESSION #:

NP_005212.1

PURIFICATION:

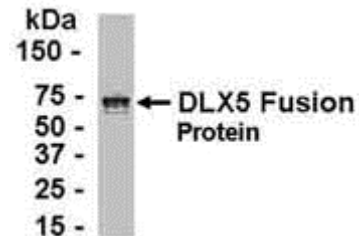
Immunoaffinity Purified

BUFFER:

Phosphate-Buffered Saline. No preservatives added.

APPLICATION:

Homeobox protein DLX-5 IgY antibody can be used for the detection of Homeobox protein DLX-5 by Western Blot.



E coli-derived fusion protein as test antigen. Affinity-purified IgY dilution: 1:2000, Goat anti-IgY-HRP dilution: 1:1000. Colorimetric method for signal development.

STORAGE:

This antibody can be stored at 4°C for short term (weeks). Long term storage should be at -20°C. As with all antibodies care should be taken to avoid repeated freeze thaw cycles. Antibodies should not be exposed to prolonged high temperatures.

USER NOTES:

When working with antibodies optimal dilutions/concentrations should be determined by the end user for each application. The information provided is a guideline for antibody use. As with all ProSci antibodies, this antibody is for research use only.