

XPNPEP1 Antibody

Aminoacylproline aminopeptidase

CATALOG NO.: XW-8021

BACKGROUND:

CATALYTIC ACTIVITY: Release of any N-terminal amino acid, including proline, that is linked to proline, even from a dipeptide or tripeptide. **SUBUNIT:** Homodimer. **SIMILARITY:** Belongs to the peptidase M24B family. **COFACTOR:** Manganese. **ENZYME REGULATION:** Inhibited by apstatin and the metal ion chelators EDTA and 1,10-phenanthroline. Partially inhibited by dithiothreitol. Not inhibited by enalaprilat or amastatin.

TESTED APPLICATION:

WB

SPECIES REACTIVITY:

H,M,R

CLONALITY:

Polyclonal

HOST:

Chicken

IMMUNOGEN:

401-623

PROTEIN GI #:

21359929

PROTEIN ACCESSION #:

NP_065116.2

PURIFICATION:

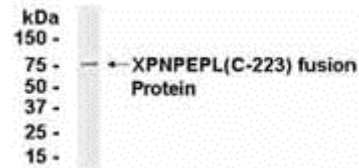
Immunoaffinity Purified

BUFFER:

Phosphate-Buffered Saline. No preservatives added.

APPLICATION:

Xaa-Pro aminopeptidase 1 IgY antibody can be used for the detection of Xaa-Pro aminopeptidase 1 by Western Blot.



E coli-derived fusion protein as test antigen. Affinity-purified IgY dilution: 1:2000, Goat anti-IgY-HRP dilution: 1:1000. Colorimetric method for signal development.

STORAGE:

This antibody can be stored at 4°C for short term (weeks). Long term storage should be at -20°C. As with all antibodies care should be taken to avoid repeated freeze thaw cycles. Antibodies should not be exposed to prolonged high temperatures.

USER NOTES:

When working with antibodies optimal dilutions/concentrations should be determined by the end user for each application. The information provided is a guideline for antibody use. As with all ProSci antibodies, this antibody is for research use only.