

M6PRBP1 Antibody

Cargo selection protein TIP47

CATALOG NO.: XW-8019

BACKGROUND:

FUNCTION: Required for the transport of mannose 6-phosphate receptors (MPR) from endosomes to the trans-Golgi network. **SUBUNIT:** Interacts with the cytoplasmic domains of both M6PR and IGF2R. Homo-oligomer. Isoform A also exists as a homodimer (known as PP17C). **SIMILARITY:** Belongs to the peripilin family. **SUBCELLULAR LOCATION:** Cytoplasmic; membrane associated on endosomes. Detected in the envelope and the core of lipid bodies and in lipid sails

TESTED APPLICATION:

WB

SPECIES REACTIVITY:

H

CLONALITY:

Polyclonal

HOST:

Chicken

IMMUNOGEN:

1-434

PROTEIN GI #:

20127486

PROTEIN ACCESSION #:

NP_005808.2

PURIFICATION:

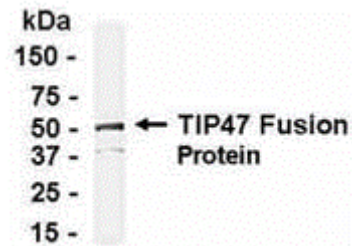
Immunoaffinity Purified

BUFFER:

Phosphate-Buffered Saline. No preservatives added.

APPLICATION:

Mannose-6-phosphate receptor binding protein 1 IgY antibody can be used for the detection of Mannose-6-phosphate receptor binding protein 1 by Western Blot.



E coli-derived fusion protein as test antigen. Affinity-purified IgY dilution: 1:2000, Goat anti-IgY-HRP dilution: 1:1000. Colorimetric method for signal development.

STORAGE:

This antibody can be stored at 4°C for short term (weeks). Long term storage should be at -20°C. As with all antibodies care should be taken to avoid repeated freeze thaw cycles. Antibodies should not be exposed to prolonged high temperatures.

USER NOTES:

When working with antibodies optimal dilutions/concentrations should be determined by the end user for each application. The information provided is a guideline for antibody use. As with all ProSci antibodies, this antibody is for research use only.