

## NAPG Antibody

*N-ethylmaleimide-sensitive factor attachment protein*

**CATALOG NO.:** XW-7977

**BACKGROUND:**

**FUNCTION:** Required for vesicular transport between the endoplasmic reticulum and the Golgi apparatus. **SUBUNIT:** Binds RIP11. **SIMILARITY:** Belongs to the SNAP family. **SUBCELLULAR LOCATION:** Cytoplasmic peripheral membrane protein (By similarity).

**TESTED APPLICATION:**

WB

**SPECIES REACTIVITY:**

H,M,R

**CLONALITY:**

Polyclonal

**HOST:**

Chicken

**IMMUNOGEN:**

1-268

**PROTEIN GI #:**

4505331

**PROTEIN ACCESSION #:**

NP\_003817.1

**PURIFICATION:**

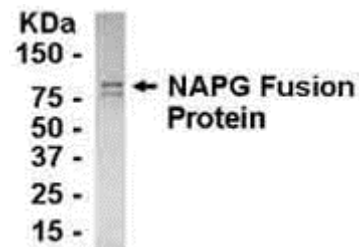
Immunoaffinity Purified

**BUFFER:**

Phosphate-Buffered Saline. No preservatives added.

**APPLICATION:**

gamma-soluble NSF attachment protein IgY antibody can be used for the detection of gamma-soluble NSF attachment protein by Western Blot.



E coli-derived fusion protein as test antigen. Affinity-purified IgY dilution: 1:2000, Goat anti-IgY-HRP dilution: 1:1000. Colorimetric method for signal development.

**STORAGE:**

This antibody can be stored at 4°C for short term (weeks). Long term storage should be at -20°C. As with all antibodies care should be taken to avoid repeated freeze thaw cycles. Antibodies should not be exposed to prolonged high temperatures.

**USER NOTES:**

When working with antibodies optimal dilutions/concentrations should be determined by the end user for each application. The information provided is a guideline for antibody use. As with all ProSci antibodies, this antibody is for research use only.