

GABARAPL2 Antibody

g-aminobutyric acid receptor-associated protein-like 2

CATALOG NO.: XW-7929

BACKGROUND:

FUNCTION: Involved in intra-Golgi traffic. Modulates intra-Golgi transport through coupling between NSF activity and SNAREs activation. It first stimulates the ATPase activity of NSF which in turn stimulates the association with GOSR1 (By similarity). **SUBUNIT:** Monomer. Interacts with GABRG2, NSF, GOSR1 and beta-tubulin (By similarity). Interacts with ULK1.

TESTED APPLICATION:

WB

SPECIES REACTIVITY:

H,M,R,B

CLONALITY:

Polyclonal

HOST:

Chicken

IMMUNOGEN:

1-117

PROTEIN GI #:

6005768

PROTEIN ACCESSION #:

NP_009216.1

PURIFICATION:

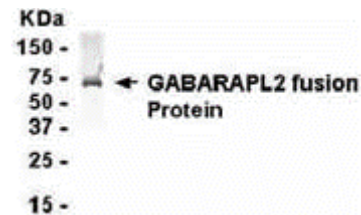
Immunoaffinity Purified

BUFFER:

Phosphate-Buffered Saline. No preservatives added.

APPLICATION:

gamma-aminobutyric acid receptor-associated protein-like 2 IgY antibody can be used for the detection of gamma-aminobutyric acid receptor-associated protein-like 2 by Western Blot.



E coli-derived fusion protein as test antigen. Affinity-purified IgY dilution: 1:2000, Goat anti-IgY-HRP dilution: 1:1000. Colorimetric method for signal development.

STORAGE:

This antibody can be stored at 4°C for short term (weeks). Long term storage should be at -20°C. As with all antibodies care should be taken to avoid repeated freeze thaw cycles. Antibodies should not be exposed to prolonged high temperatures.

USER NOTES:

When working with antibodies optimal dilutions/concentrations should be determined by the end user for each application. The information provided is a guideline for antibody use. As with all ProSci antibodies, this antibody is for research use only.