

XRCC3 Antibody

213-346 = X-ray repair cross-complementing protein 3

CATALOG NO.: XW-7922

BACKGROUND:

This protein is a member of the RecA/Rad51-related protein family that participates in homologous recombination to maintain chromosome stability and repair DNA damage. This protein functionally complements Chinese hamster irs1SF, a repair-deficient mutant that exhibits hypersensitivity to a number of different DNA-damaging agents and is chromosomally unstable. A rare microsatellite polymorphism in this gene is associated with cancer in patients of varying radiosensitivity. **FUNCTION:** Involved in the homologous recombination repair (HRR) pathway of double-stranded DNA, thought to repair chromosomal fragmentation, translocations and deletions. **DISEASE:** Met-241 is associated with the development of cutaneous malignant melanoma. **SUBUNIT:** Interacts with RAD51C and RAD51. Part of a complex consisting of RAD51B, RAD51C, RAD51D, XRCC2 and XRCC3. **SIMILARITY:** Belongs to the recA family. RAD51 subfamily.

TESTED APPLICATION:

E, WB

SPECIES REACTIVITY:

H

CLONALITY:

Polyclonal

HOST:

Chicken

IMMUNOGEN:

213-346

PROTEIN GI #:

4885659

PROTEIN ACCESSION #:

NP_005423.1

PURIFICATION:

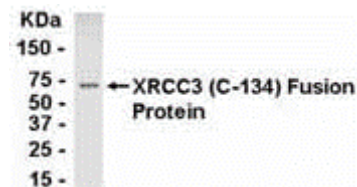
Immunoaffinity Purified

BUFFER:

Phosphate-Buffered Saline. No preservatives added.

APPLICATION:

XRCC3 antibody can be used for the detection of DNA-repair protein XRCC3 by ELISA and Western Blot, may also work for ICC and IHC.



Direct Elisa Test. Protein as test antigen. Affi-pure IgY as primary antibody and Goat anti-IgY HRP as 2nd antibody. Fixed amount of antibody (1 µg/ml) and serial dilutions of antigen. E coli-derived fusion protein as test antigen.

Affinity-purified IgY d

STORAGE:

This antibody can be stored at 4°C for short term (weeks). Long term storage should be at -20°C. As with all antibodies care should be taken to avoid repeated freeze thaw cycles. Antibodies should not be exposed to prolonged high temperatures.

USER NOTES:

When working with antibodies optimal dilutions/concentrations should be determined by the end user for each application. The information provided is a guideline for antibody use. As with all ProSci antibodies, this antibody is for research use only.