

GBL Antibody

G protein b subunit

CATALOG NO.: XW-7884

BACKGROUND:

GBL protein contains seven WD-40 repeats, which are common to G-protein beta subunits (Gbeta). Although chemically and structurally similar to Gbeta subunits, the amino acid sequence was found to be only 31-41% similar and thus was named Gbeta-like. Expression of GBL mRNA was highest in the brain and testis, followed by lung, heart, kidney, skeletal muscle, spleen and liver. The ubiquitous nature of the tissue expression pattern of GBL is similar to that of the insulin receptor, which suggests that insulin may influence GBL expression. GBL protein and mRNA levels, in fully differentiated 3T3-L1 adipocytes, were upregulated by insulin in a concentration-dependent fashion. These changes were highly sensitive to insulin stimulation, being minimally affected by doses as low as 0.1 nM and maximally elevated by 1 nM doses. These data suggest that insulin regulates GBL production and imply that some of the actions of insulin may be mediated, in part, by this intracellular protein

TESTED APPLICATION:

WB

SPECIES REACTIVITY:

H,M,R

CLONALITY:

Polyclonal

HOST:

Chicken

IMMUNOGEN:

20-270

PROTEIN GI #:

21361908

PROTEIN ACCESSION #:

NP_071767.2

PURIFICATION:

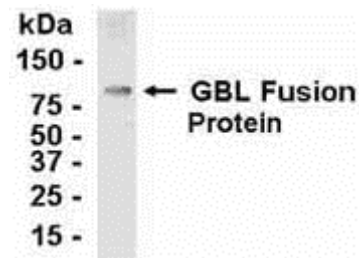
Immunoaffinity Purified

BUFFER:

Phosphate-Buffered Saline. No preservatives added.

APPLICATION:

G protein beta subunit IgY antibody can be used for the detection of G protein beta subunit by Western Blot.



E coli-derived fusion protein as test antigen. Affinity-purified IgY dilution: 1:2000, Goat anti-IgY-HRP dilution: 1:1000. Colorimetric method for signal development.

STORAGE:

This antibody can be stored at 4°C for short term (weeks). Long term storage should be at -20°C. As with all antibodies care should be taken to avoid repeated freeze thaw cycles. Antibodies should not be exposed to prolonged high temperatures.

USER NOTES:

When working with antibodies optimal dilutions/concentrations should be determined by the end user for each application. The information provided is a guideline for antibody use. As with all ProSci antibodies, this antibody is for research use only.