

## YWHAE Antibody

*14-3-3 protein epsilon, 14-3-3E*

**CATALOG NO.:** XW-7874

**BACKGROUND:**

**FUNCTION:** Adapter protein implicated in the regulation of a large spectrum of both general and specialized signaling pathway. Binds to a large number of partners, usually by recognition of a phosphoserine or phosphothreonine motif. Binding generally results in the modulation of the activity of the binding partner. **SUBUNIT:** Homodimer. Interacts with NDEL1 (By similarity). Interacts with HCV core protein. **SUMMARY:** This protein product belongs to the 14-3-3 family of proteins which mediate signal transduction by binding to phosphoserine-containing proteins. This highly conserved protein family is found in both plants and mammals, and this protein is 100% identical to the mouse ortholog. It interacts with CDC25 phosphatases, RAF1 and IRS1 proteins, suggesting its role in diverse biochemical activities related to signal transduction, such as cell division and regulation of insulin sensitivity. It has also been implicated in the pathogenesis of small cell lung cancer

**TESTED APPLICATION:**

WB

**SPECIES REACTIVITY:**

H,M,R,B

**CLONALITY:**

Polyclonal

**HOST:**

Chicken

**IMMUNOGEN:**

1-255

**PROTEIN GI #:**

5803225

**PROTEIN ACCESSION #:**

NP\_006752.1

**PURIFICATION:**

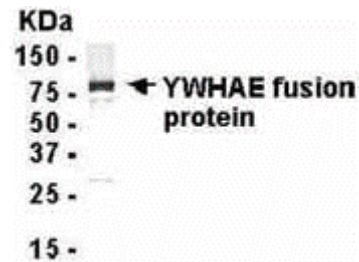
Immunoaffinity Purified

**BUFFER:**

Phosphate-Buffered Saline. No preservatives added.

**APPLICATION:**

14-3-3 protein epsilon IgY antibody can be used for the detection of 14-3-3 protein epsilon by Western Blot.



E coli-derived fusion protein as test antigen. Affinity-purified IgY dilution: 1:2000, Goat anti-IgY-HRP dilution: 1:1000. Colorimetric method for signal development.

**STORAGE:**

This antibody can be stored at 4°C for short term (weeks). Long term storage should be at -20°C. As with all antibodies care should be taken to avoid repeated freeze thaw cycles. Antibodies should not be exposed to prolonged high temperatures.

**USER NOTES:**

When working with antibodies optimal dilutions/concentrations should be determined by the end user for each application. The information provided is a guideline for antibody use. As with all ProSci antibodies, this antibody is for research use only.