

AMD1 Antibody

S-adenosylmethionine decarboxylase proenzyme, AdoMetDC, SamDC

CATALOG NO.: XW-7873

BACKGROUND:

CATALYTIC ACTIVITY: S-adenosyl-L-methionine = (5-deoxy-5-adenosyl)(3-aminopropyl)-methylsulfonium salt + CO₂. **SUBUNIT:** Heterotetramer of two alpha and two beta chains. **SIMILARITY:** Belongs to the eukaryotic AdoMetDC family. **COFACTOR:** Pyruvoyl group. **ENZYME REGULATION:** Both proenzyme processing and catalytic activity are stimulated by putrescine. Catalytic activity is inhibited by iodoacetic acid. **PATHWAY:** Amine and polyamine biosynthesis.

TESTED APPLICATION:

E, WB

SPECIES REACTIVITY:

H, M, R, B

CLONALITY:

Polyclonal

HOST:

Chicken

IMMUNOGEN:

96-334

PROTEIN GI #:

4502069

PROTEIN ACCESSION #:

NP_001625.1

PURIFICATION:

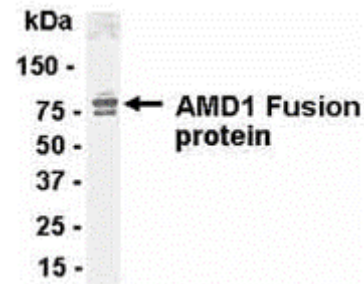
Immunoaffinity Purified

BUFFER:

Phosphate-Buffered Saline. No preservatives added.

APPLICATION:

S-adenosylmethionine decarboxylase proenzyme IgY antibody can be used for the detection of S-adenosylmethionine decarboxylase proenzyme by ELISA and Western Blot, may also work for ICC and IHC.



Direct Elisa Test. Protein as test antigen. Affi-pure IgY as primary antibody and Goat anti-IgY HRP as 2nd antibody.

Fixed amount of antigen (5 µg/ml) and serial dilutions of antibody. E coli-derived fusion protein as test antigen.

Affinity-purified IgY d

STORAGE:

This antibody can be stored at 4°C for short term (weeks). Long term storage should be at -20°C. As with all antibodies care should be taken to avoid repeated freeze thaw cycles. Antibodies should not be exposed to prolonged high temperatures.

USER NOTES:

When working with antibodies optimal dilutions/concentrations should be determined by the end user for each application. The information provided is a guideline for antibody use. As with all ProSci antibodies, this antibody is for research use only.