

DAPP1 Antibody

B lymphocyte adapter protein Bam32

CATALOG NO.: XW-7853

BACKGROUND:

FUNCTION: May act as a B cell-associated adapter that regulates B cell antigen receptor (BCR)-signaling downstream of PI3K. **SUBUNIT:** Interacts with PtdIns(3,4,5)P3 and PLCG2. *in vitro*, interacts with PtdIns(3,4)P2. **PTM:** Phosphorylated on tyrosine residues. **SIMILARITY:** Contains 1 SH2 domain. **SUBCELLULAR LOCATION:** Cytoplasmic and membrane-associated after cell stimulation leading to its translocation. **TISSUE SPECIFICITY:** Highly expressed in placenta and lung, followed by brain, heart, kidney, liver, pancreas and skeletal muscle. Expressed by B lymphocytes, but not T-lymphocytes or nonhematopoietic cells.

TESTED APPLICATION:

WB

SPECIES REACTIVITY:

H

CLONALITY:

Polyclonal

HOST:

Chicken

IMMUNOGEN:

119-164

PROTEIN GI #:

7657007

PROTEIN ACCESSION #:

NP_055210.1

PURIFICATION:

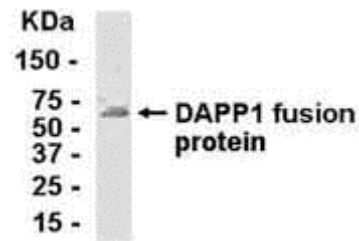
Immunoaffinity Purified

BUFFER:

Phosphate-Buffered Saline. No preservatives added.

APPLICATION:

Dual adapter for phosphotyrosine and 3-phosphotyrosine and 3-phosphoinositide IgY antibody can be used for the detection of Dual adapter for phosphotyrosine and 3-phosphotyrosine and 3-phosphoinositide by Western Blot.



E coli-derived fusion protein as test antigen. Affinity-purified IgY dilution: 1:2000, Goat anti-IgY-HRP dilution: 1:1000. Colorimetric method for signal development.

STORAGE:

This antibody can be stored at 4°C for short term (weeks). Long term storage should be at -20°C. As with all antibodies care should be taken to avoid repeated freeze thaw cycles. Antibodies should not be exposed to prolonged high temperatures.

USER NOTES:

When working with antibodies optimal dilutions/concentrations should be determined by the end user for each application. The information provided is a guideline for antibody use. As with all ProSci antibodies, this antibody is for research use only.