

ADAM23 Antibody

A disintegrin and metalloproteinase domain 23

CATALOG NO.: XW-7809

BACKGROUND:

FUNCTION: May play a role in cell-cell and cell-matrix interactions. This is a non-catalytic metalloprotease-like protein. **SUBUNIT:** Ligand for integrin alpha-V/gamma-3. **SIMILARITY:** Contains 1 peptidase M12B domain. **SUBCELLULAR LOCATION:** Membrane; single-pass type I membrane protein (Potential). Secreted protein. Isoform Gamma. **TISSUE SPECIFICITY:** Highly expressed in the brain and weakly expressed in the heart. In the brain, expressed prominently in the amygdala, caudate nucleus, hypothalamus, thalamus, cerebral cortex and occipital pole. **DEVELOPMENTAL STAGE:** Highly expressed in the fetal brain. **DOMAIN:** A conserved motif AVN[ED]CD within the disintegrin-like domain could be involved in the binding to the integrin receptor. **SUMMARY:** This protein is a member of the ADAM (a disintegrin and metalloprotease domain) family. Members of this family are membrane-anchored proteins structurally related to snake venom disintegrins, and have been implicated in a variety of biological processes involving cell-cell and cell-matrix interactions, including fertilization, muscle development, and neurogenesis. This protein is highly expressed in the brain and may function as an integrin ligand in the brain. **Cat.No. XW-7809 ADAM 23 IgY

TESTED APPLICATION:

WB

SPECIES REACTIVITY:

H

CLONALITY:

Polyclonal

HOST:

Chicken

IMMUNOGEN:

72-144

PROTEIN GI #:

4501913

PROTEIN ACCESSION #:

NP_003803.1

PURIFICATION:

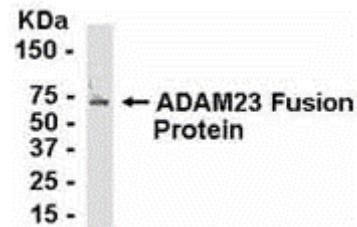
Immunoaffinity Purified

BUFFER:

Phosphate-Buffered Saline. No preservatives added.

APPLICATION:

ADAM 23 IgY antibody can be used for the detection of ADAM 23 by Western Blot.



E coli-derived fusion protein as test antigen. Affinity-purified IgY dilution: 1:2000, Goat anti-IgY-HRP dilution: 1:1000. Colorimetric method for signal development.

STORAGE:

This antibody can be stored at 4°C for short term (weeks). Long term storage should be at -20°C. As with all antibodies care should be taken to avoid repeated freeze thaw cycles. Antibodies should not be exposed to prolonged high temperatures.

USER NOTES:

When working with antibodies optimal dilutions/concentrations should be determined by the end user for each application. The information provided is a guideline for antibody use. As with all ProSci antibodies, this antibody is for research use only.



12170 Flint Place
Poway, CA 92064
Tel: 858-513-2638
Fax: 858-513-2692
Toll Free: 888-513-9525
techsupport@prosci-inc.com
