

ITGB2 Antibody

Cell surface adhesion glycoproteins LFA-1/CR3/p150,95 b-subunit

CATALOG NO.: XW-7798

BACKGROUND:

FUNCTION: Integrin alpha-L/beta-2 is a receptor for ICAM1, ICAM2, ICAM3 and ICAM4. Integrins alpha-M/beta-2 and alpha-X/beta-2 are receptors for the iC3b fragment of the third complement component and for fibrinogen. Integrin alpha-X/beta-2 recognizes the sequence G-P-R in fibrinogen alpha-chain. Integrin alpha-M/beta-2 recognizes P1 and P2 peptides of fibrinogen gamma chain. Integrin alpha-M/beta-2 is also a receptor for factor X. Integrin alpha-D/beta-2 is a receptor for ICAM3 and VCAM1

TESTED APPLICATION:

WB

SPECIES REACTIVITY:

H

CLONALITY:

Polyclonal

HOST:

Chicken

IMMUNOGEN:

49-111

PROTEIN GI #:

4557886

PROTEIN ACCESSION #:

NP_000202.1

PURIFICATION:

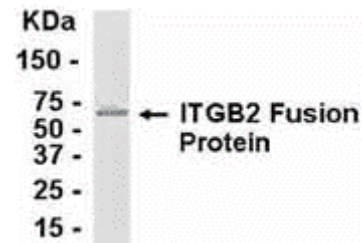
Immunoaffinity Purified

BUFFER:

Phosphate-Buffered Saline. No preservatives added.

APPLICATION:

Integrin beta-2 IgY antibody can be used for the detection of Integrin beta-2 by Western Blot.



E coli-derived fusion protein as test antigen. Affinity-purified IgY dilution: 1:2000, Goat anti-IgY-HRP dilution: 1:1000. Colorimetric method for signal development.

STORAGE:

This antibody can be stored at 4°C for short term (weeks). Long term storage should be at -20°C. As with all antibodies care should be taken to avoid repeated freeze thaw cycles. Antibodies should not be exposed to prolonged high temperatures.

USER NOTES:

When working with antibodies optimal dilutions/concentrations should be determined by the end user for each application. The information provided is a guideline for antibody use. As with all ProSci antibodies, this antibody is for research use only.