

## MYC Antibody

*Myc proto-oncogene protein, c-Myc, Transcription factor p64*

**CATALOG NO.:** XW-7756

**BACKGROUND:**

**FUNCTION:** Participates in the regulation of gene transcription. Binds DNA in a non-specific manner, yet also specifically recognizes the core sequence CAC[GA]TG. Seems to activate the transcription of growth-related genes.  
**DISEASE:** A chromosomal aberration involving MYC may be a cause of a form of B-cell chronic lymphocytic leukemia. Translocation t(8;12)(q24;q22) with BTG1. **SUBUNIT:** Efficient DNA binding requires dimerization with another bHLH protein. Binds DNA as a heterodimer with MAX. Interacts with TAF1C

**TESTED APPLICATION:**

E, WB

**SPECIES REACTIVITY:**

H, M, R

**CLONALITY:**

Polyclonal

**HOST:**

Chicken

**IMMUNOGEN:**

410-419

**PROTEIN GI #:**

12962935

**PROTEIN ACCESSION #:**

NP\_002458.1

**PURIFICATION:**

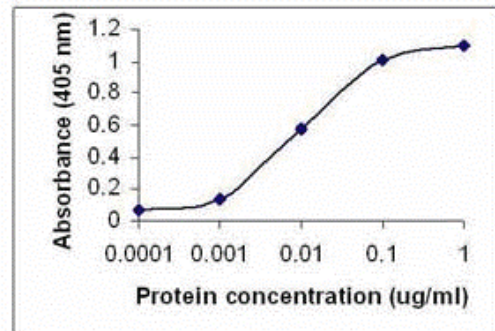
Immunoaffinity Purified

**BUFFER:**

Phosphate-Buffered Saline. No preservatives added.

**APPLICATION:**

Myc proto-oncogene protein IgY antibody can be used for the detection of Myc proto-oncogene protein by ELISA and Western Blot, may also work for ICC and IHC.



Free peptide as test antigen. Affinity-purified anti-C-myc (C-10) IgY as 1st antibody (1µg/ml), and Goat anti-IgY-HRP as 2nd antibody.

**STORAGE:**

This antibody can be stored at 4°C for short term (weeks). Long term storage should be at -20°C. As with all antibodies care should be taken to avoid repeated freeze thaw cycles. Antibodies should not be exposed to prolonged high temperatures.

**USER NOTES:**

When working with antibodies optimal dilutions/concentrations should be determined by the end user for each application. The information provided is a guideline for antibody use. As with all ProSci antibodies, this antibody is for research use only.