

CCL4 Antibody

Macrophage inflammatory protein 1-b

CATALOG NO.: XW-7720

BACKGROUND:

FUNCTION: Monokine with inflammatory and chemokinetic properties. Binds to CCR5. One of the major HIV-suppressive factors produced by CD8+ T cells. Recombinant MIP-1-beta induces a dose-dependent inhibition of different strains of HIV-1, HIV-2, and simian immunodeficiency virus (SIV). The processed form MIP-1-beta(3-69) retains the abilities to induce down-modulation of surface expression of the chemokine receptor CCR5 and to inhibit the CCR5-mediated entry of HIV-1 in T cells. MIP-1-beta(3-69) is also a ligand for CCR1 and CCR2 isoform B

TESTED APPLICATION:

E, WB

SPECIES REACTIVITY:

H

CLONALITY:

Polyclonal

HOST:

Chicken

IMMUNOGEN:

27-92

PROTEIN GI #:

4506845

PROTEIN ACCESSION #:

NP_002975.1

PURIFICATION:

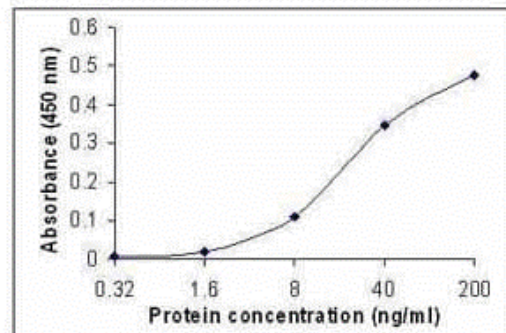
Immunoaffinity Purified

BUFFER:

Phosphate-Buffered Saline. No preservatives added.

APPLICATION:

Small inducible cytokine A4 IgY antibody can be used for the detection of Small inducible cytokine A4 by ELISA and Western Blot, may also work for ICC and IHC.



Recombinant protein as test antigen. Rabbit polyclonal anti-MIP 1b IgG as capture antibody, Affinity-Purified MIP 1b IgY-Biotin as detection antibody.

STORAGE:

This antibody can be stored at 4°C for short term (weeks). Long term storage should be at -20°C. As with all antibodies care should be taken to avoid repeated freeze thaw cycles. Antibodies should not be exposed to prolonged high temperatures.

USER NOTES:

When working with antibodies optimal dilutions/concentrations should be determined by the end user for each application. The information provided is a guideline for antibody use. As with all ProSci antibodies, this antibody is for research use only.