

KCNC2 Antibody

Potassium voltage-gated potassium channel subfamily C member 2

CATALOG NO.: XW-7716

BACKGROUND:

The Shaker gene family of *Drosophila* encodes components of voltage-gated potassium channels and is comprised of four subfamilies. Based on sequence similarity, this gene is similar to one of these subfamilies, namely the Shaw subfamily. The protein encoded by this gene belongs to the delayed rectifier class of channel proteins and is an integral membrane protein that mediates the voltage-dependent potassium ion permeability of excitable membranes. Three transcript variants encoding three different isoforms have been found for this gene

TESTED APPLICATION:

WB

SPECIES REACTIVITY:

H,R

CLONALITY:

Polyclonal

HOST:

Chicken

IMMUNOGEN:

483-638

PROTEIN GI #:

21217563

PROTEIN ACCESSION #:

NP_631875.1

PURIFICATION:

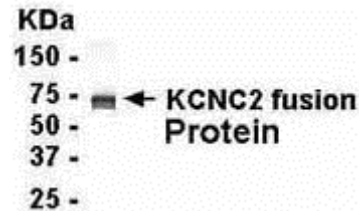
Immunoaffinity Purified

BUFFER:

Phosphate-Buffered Saline. No preservatives added.

APPLICATION:

Voltage gated potassium channel Kv3.2b IgY antibody can be used for the detection of Voltage gated potassium channel Kv3.2b by Western Blot.



E coli-derived fusion protein as test antigen. Affinity-purified IgY dilution: 1:2000, Goat anti-IgY-HRP dilution: 1:1000. Colorimetric method for signal development.

STORAGE:

This antibody can be stored at 4°C for short term (weeks). Long term storage should be at -20°C. As with all antibodies care should be taken to avoid repeated freeze thaw cycles. Antibodies should not be exposed to prolonged high temperatures.

USER NOTES:

When working with antibodies optimal dilutions/concentrations should be determined by the end user for each application. The information provided is a guideline for antibody use. As with all ProSci antibodies, this antibody is for research use only.