

WAS Antibody

Wiskott-Aldrich syndrome protein, WASp

CATALOG NO.: XW-7675

BACKGROUND:

FUNCTION: Effector protein for Rho-type GTPases, providing a link with the Arp2/3 complex that regulates the structure and dynamics of the actin cytoskeleton. Important for efficient actin polymerization. Possible regulator of lymphocyte and platelet function. **DISEASE:** Defects in WAS are the cause of isolated X-linked thrombocytopenia (XLT) [MIM:313900]. XLT is clinically mild with small platelets and subclinical leukocyte abnormalities

TESTED APPLICATION:

WB

SPECIES REACTIVITY:

H

CLONALITY:

Polyclonal

HOST:

Chicken

IMMUNOGEN:

313-425

PROTEIN GI #:

4507909

PROTEIN ACCESSION #:

NP_000368.1

PURIFICATION:

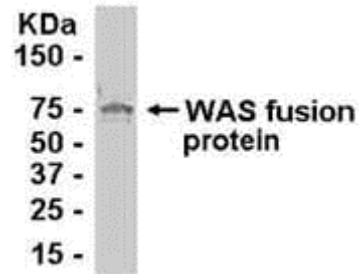
Immunoaffinity Purified

BUFFER:

Phosphate-Buffered Saline. No preservatives added.

APPLICATION:

Wiskott-Aldrich syndrome protein IgY antibody can be used for the detection of Wiskott-Aldrich syndrome protein by Western Blot.



E coli-derived fusion protein as test antigen. Affinity-purified IgY dilution: 1:2000, Goat anti-IgY-HRP dilution: 1:1000. Colorimetric method for signal development.

STORAGE:

This antibody can be stored at 4°C for short term (weeks). Long term storage should be at -20°C. As with all antibodies care should be taken to avoid repeated freeze thaw cycles. Antibodies should not be exposed to prolonged high temperatures.

USER NOTES:

When working with antibodies optimal dilutions/concentrations should be determined by the end user for each application. The information provided is a guideline for antibody use. As with all ProSci antibodies, this antibody is for research use only.