

NELFA Antibody

Wolf-Hirschhorn syndrome candidate 2 protein

CATALOG NO.: XW-7656

BACKGROUND:

Wolf-Hirschhorn syndrome candidate 2 protein; WHSC2 protein; NELFA. WHSC2 is expressed ubiquitously with higher levels in fetal than in adult tissues. Wolf-Hirschhorn syndrome (WHS) is a malformation syndrome associated with a hemizygous deletion of the distal short arm of chromosome 4. This gene is mapped to the 165 kb WHS critical region, and may play a role in the phenotype of the WHS or Pitt-Rogers-Danks syndrome. The encoded protein is found to be capable of reacting with HLA-A2-restricted and tumor-specific cytotoxic T lymphocytes, suggesting a target for use in specific immunotherapy for a large number of cancer patients. This protein has also been shown to be a member of the NELF (negative elongation factor) protein complex that participates in the regulation of RNA polymerase II transcription elongation.

TESTED APPLICATION:

WB

SPECIES REACTIVITY:

H,M,R

CLONALITY:

Polyclonal

HOST:

Chicken

IMMUNOGEN:

104-291

PROTEIN GI #:

5032227

PROTEIN ACCESSION #:

NP_005654.1

PURIFICATION:

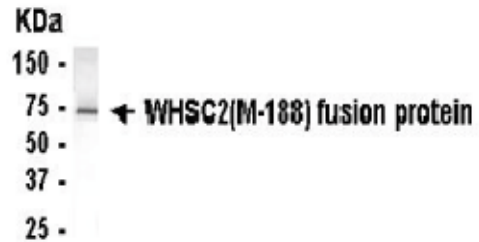
Antigen affinity-purified

BUFFER:

Phosphate-Buffered Saline. No preservatives added.

APPLICATION:

WHSC2 (M-188) IgY antibody can be used for the detection of WHSC2 (M-188) by Western blot, may also work for IHC and ICC.



WHSC2 (M-188) IgY Antibody

STORAGE:

This antibody can be stored at 4°C for short term (weeks). Long term storage should be at -20°C. As with all antibodies care should be taken to avoid repeated freeze thaw cycles. Antibodies should not be exposed to prolonged high temperatures.

USER NOTES:

When working with antibodies optimal dilutions/concentrations should be determined by the end user for each application. The information provided is a guideline for antibody use. As with all ProSci antibodies, this antibody is for research use only.