

## NELFA Antibody

*Wolf-Hirschhorn syndrome candidate 2 protein*

**CATALOG NO.:** XW-7655

**BACKGROUND:**

Wolf-Hirschhorn syndrome candidate 2 protein; WHSC2 protein; NELFA. WHSC2 is expressed ubiquitously with higher levels in fetal than in adult tissues. Wolf-Hirschhorn syndrome (WHS) is a malformation syndrome associated with a hemizygous deletion of the distal short arm of chromosome 4. This gene is mapped to the 165 kb WHS critical region, and may play a role in the phenotype of the WHS or Pitt-Rogers-Danks syndrome. The encoded protein is found to be capable of reacting with HLA-A2-restricted and tumor-specific cytotoxic T lymphocytes, suggesting a target for use in specific immunotherapy for a large number of cancer patients. This protein has also been shown to be a member of the NELF (negative elongation factor) protein complex that participates in the regulation of RNA polymerase II transcription elongation.

**TESTED APPLICATION:**

WB

**SPECIES REACTIVITY:**

H,M,R

**CLONALITY:**

Polyclonal

**HOST:**

Chicken

**IMMUNOGEN:**

334-528

**PROTEIN GI #:**

5032227

**PROTEIN ACCESSION #:**

NP\_005654.1

**PURIFICATION:**

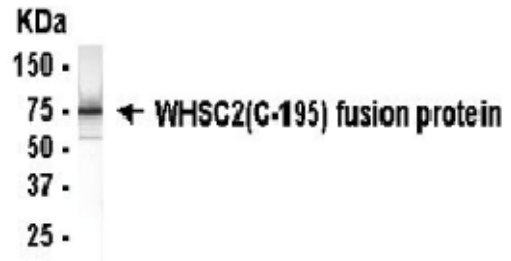
Antigen affinity-purified

**BUFFER:**

Phosphate-Buffered Saline. No preservatives added.

**APPLICATION:**

WHSC2 (C-195) IgY antibody can be used for the detection of WHSC2 (C-195) by Western blot, may also work for IHC and ICC.



WHSC2 (C-195) IgY Antibody

**STORAGE:**

This antibody can be stored at 4°C for short term (weeks). Long term storage should be at -20°C. As with all antibodies care should be taken to avoid repeated freeze thaw cycles. Antibodies should not be exposed to prolonged high temperatures.

**USER NOTES:**

When working with antibodies optimal dilutions/concentrations should be determined by the end user for each application. The information provided is a guideline for antibody use. As with all ProSci antibodies, this antibody is for research use only.