

VAMP2 Antibody

Vesicle-associated membrane protein 2 (synaptobrevin 2)

CATALOG NO.: XW-7647

BACKGROUND:

Chicken polyclonal IgY Antibodies against Vamp2. Vesicle-associated membrane protein 2 (synaptobrevin 2); synaptobrevin 2.

TESTED APPLICATION:

ICC

SPECIES REACTIVITY:

H,M,R

CLONALITY:

Polyclonal

HOST:

Chicken

IMMUNOGEN:

43-93

PROTEIN GI #:

7657675

PROTEIN ACCESSION #:

NP_055047.1

PURIFICATION:

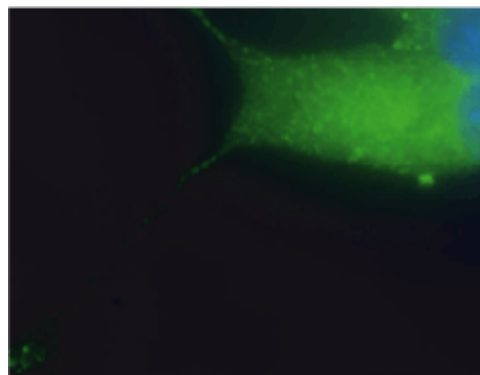
Antigen affinity-purified

BUFFER:

Phosphate-Buffered Saline. No preservatives added.

APPLICATION:

Vamp 2 IgY antibody can be used for the detection of Vamp 2 by ICC, may also work for IHC.



Vamp 2 IgY Antibody

STORAGE:

This antibody can be stored at 4°C for short term (weeks). Long term storage should be at -20°C. As with all antibodies care should be taken to avoid repeated freeze thaw cycles. Antibodies should not be exposed to prolonged high temperatures.

USER NOTES:

When working with antibodies optimal dilutions/concentrations should be determined by the end user for each application. The information provided is a guideline for antibody use. As with all ProSci antibodies, this antibody is for research use only.