

PTPN21 Antibody

Protein tyrosine phosphatase, non-receptor type 21

CATALOG NO.: XW-7485

BACKGROUND:

PTPN21; protein tyrosine phosphatase, non-receptor type 21; protein tyrosine phosphatase D1. PTPN21 is a member of the protein tyrosine phosphatase (PTP) family. PTPN21 contains an N-terminal domain, similar to cytoskeletal-associated proteins including band 4.1, ezrin, merlin, and radixin. It interacts with BMX/ETK, and this interaction increases the activation of STAT3, but not STAT2 kinase. Studies of the similar gene in mice suggested the possible roles of this PTP in liver regeneration and spermatogenesis.

TESTED APPLICATION:

WB

SPECIES REACTIVITY:

H

CLONALITY:

Polyclonal

HOST:

Chicken

IMMUNOGEN:

580-837

PROTEIN GI #:

5902032

PROTEIN ACCESSION #:

NP_008970.1

PURIFICATION:

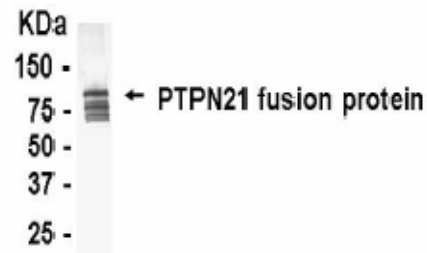
Antigen affinity-purified

BUFFER:

Phosphate-Buffered Saline. No preservatives added.

APPLICATION:

PTPN21 IgY antibody can be used for the detection of PTPN21 by Western blot, may also work for IHC and ICC.



PTPN21 IgY Antibody

STORAGE:

This antibody can be stored at 4°C for short term (weeks). Long term storage should be at -20°C. As with all antibodies care should be taken to avoid repeated freeze thaw cycles. Antibodies should not be exposed to prolonged high temperatures.

USER NOTES:

When working with antibodies optimal dilutions/concentrations should be determined by the end user for each application. The information provided is a guideline for antibody use. As with all ProSci antibodies, this antibody is for research use only.