

ENO1 Antibody

Enolase 1, phosphopyruvate hydratase

CATALOG NO.: XW-7416

BACKGROUND:

Enolase 1; phosphopyruvate hydratase; MYC promoter-binding protein 1; non-neural enolase; 2-phospho-D-glycerate hydro-lyase; tau-crystallin. Enolase 1 gene encodes one of three enolase isoenzymes found in mammals; it encodes alpha-enolase, a homodimeric soluble enzyme, and also encodes a shorter monomeric structural lens protein, tau-crystallin. The two proteins are made from the same message. The full length protein, the isoenzyme, is found in the cytoplasm. The shorter protein is produced from an alternative translation start, is localized to the nucleus, and has been found to bind to an element in the c-myc promoter.

TESTED APPLICATION:

WB

SPECIES REACTIVITY:

H,M,R

CLONALITY:

Polyclonal

HOST:

Chicken

IMMUNOGEN:

161-320

PROTEIN GI #:

4503571

PROTEIN ACCESSION #:

NP_001419.1

PURIFICATION:

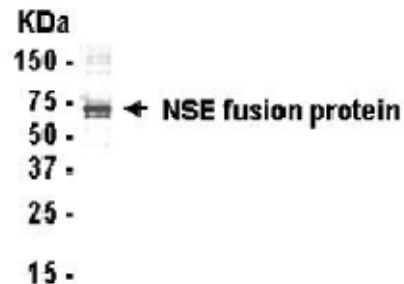
Antigen affinity-purified

BUFFER:

Phosphate-Buffered Saline. No preservatives added.

APPLICATION:

NNE IgY antibody can be used for the detection of NNE by Western blot, may also work for IHC and ICC.



NNE IgY Antibody

STORAGE:

This antibody can be stored at 4°C for short term (weeks). Long term storage should be at -20°C. As with all antibodies care should be taken to avoid repeated freeze thaw cycles. Antibodies should not be exposed to prolonged high temperatures.

USER NOTES:

When working with antibodies optimal dilutions/concentrations should be determined by the end user for each application. The information provided is a guideline for antibody use. As with all ProSci antibodies, this antibody is for research use only.