

MMP2 Antibody

Matrix metalloproteinase 2 preproprotein; gelatinase A

CATALOG NO.: XW-7387

BACKGROUND:

Matrix metalloproteinase 2 preprotein; gelatinase A; 72 kD type IV collagenase; gelatinase neutrophil. Proteins of the matrix metalloproteinase (MMP) family are involved in the breakdown of extracellular matrix in normal physiological processes as well as in disease processes. Most MMP's are secreted as inactive proproteins which are activated when cleaved by extracellular proteinases. MMP2 degrades type IV collagen, the major structural component of basement membranes. The enzyme plays a role in endometrial menstrual breakdown, regulation of vascularization and the inflammatory response.

TESTED APPLICATION:

WB

SPECIES REACTIVITY:

H,M,R

CLONALITY:

Polyclonal

HOST:

Chicken

IMMUNOGEN:

60-180

PROTEIN GI #:

11342666

PROTEIN ACCESSION #:

NP_004521.1

PURIFICATION:

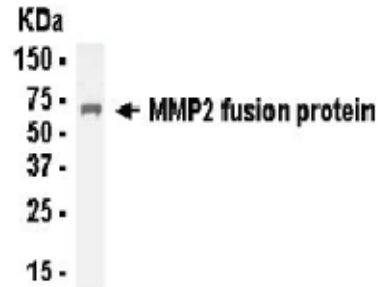
Antigen affinity-purified

BUFFER:

Phosphate-Buffered Saline. No preservatives added.

APPLICATION:

MMP2 IgY antibody can be used for the detection of MMP2 by Western blot, may also work for IHC and ICC.



MMP2 IgY Antibody

STORAGE:

This antibody can be stored at 4°C for short term (weeks). Long term storage should be at -20°C. As with all antibodies care should be taken to avoid repeated freeze thaw cycles. Antibodies should not be exposed to prolonged high temperatures.

USER NOTES:

When working with antibodies optimal dilutions/concentrations should be determined by the end user for each application. The information provided is a guideline for antibody use. As with all ProSci antibodies, this antibody is for research use only.