

MECP2 Antibody

Methyl CpG binding protein 2

CATALOG NO.: XW-7368

BACKGROUND:

Methyl CpG binding protein 2 (Rett syndrome). DNA methylation is the major modification of eukaryotic genomes and plays an essential role in mammalian development. Human proteins MECP2, MBD1, MBD2, MBD3, and MBD4 comprise a family of nuclear proteins related by the presence in each of a methyl-CpG binding domain (MBD). Each of these proteins, with the exception of MBD3, is capable of binding specifically to methylated DNA. MECP2, MBD1 and MBD2 can also repress transcription from methylated gene promoters. In contrast to other MBD family members, MECP2 is X-linked and subject to X inactivation. MECP2 is dispensible in stem cells, but is essential for embryonic development. MECP2 gene mutations are the cause of some cases of Rett syndrome, a progressive neurologic developmental disorder and one of the most common causes of mental retardation in females.

TESTED APPLICATION:

WB

SPECIES REACTIVITY:

H,M,R

CLONALITY:

Polyclonal

HOST:

Chicken

IMMUNOGEN:

170-486

PROTEIN GI #:

4826830

PROTEIN ACCESSION #:

NP_004983.1

PURIFICATION:

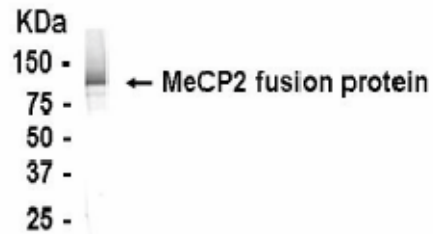
Antigen affinity-purified

BUFFER:

Phosphate-Buffered Saline. No preservatives added.

APPLICATION:

MeCP2 IgY antibody can be used for the detection of MeCP2 by Western blot, may also work for IHC and ICC.



MeCP2 IgY Antibody

STORAGE:

This antibody can be stored at 4°C for short term (weeks). Long term storage should be at -20°C. As with all antibodies care should be taken to avoid repeated freeze thaw cycles. Antibodies should not be exposed to prolonged high temperatures.

USER NOTES:

When working with antibodies optimal dilutions/concentrations should be determined by the end user for each application. The information provided is a guideline for antibody use. As with all ProSci antibodies, this antibody is for research use only.