

Macroglobulin Antibody

Macroglobulin

CATALOG NO.: XW-7360

BACKGROUND:

Chicken polyclonal IgY Antibodies against alpha-2 macroglobulin. Human serum protein. A broad range irreversible proteinase inhibitor that forms a "trap" around most proteases. a2M is so large a molecular that it tends to remain intravascular. Localized on the surface of peripheral blood lymphocytes, M.W: 725,000.

TESTED APPLICATION:

E

SPECIES REACTIVITY:

H,M,R

CLONALITY:

Polyclonal

HOST:

Chicken

IMMUNOGEN:

Full-length (plasma protein)

PROTEIN GI #:

68765

PROTEIN ACCESSION #:

Mahu

PURIFICATION:

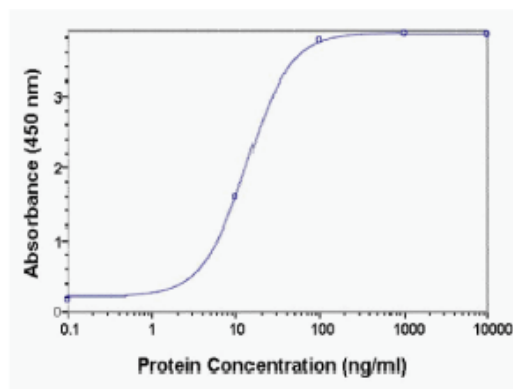
Antigen affinity-purified

BUFFER:

Phosphate-Buffered Saline. No preservatives added.

APPLICATION:

Macroglobulin IgY antibody can be used for the detection of Macroglobulin by Western blot, ELISA, IP, may also work for IHC and ICC.



Macroglobulin IgY Antibody

STORAGE:

This antibody can be stored at 4°C for short term (weeks). Long term storage should be at -20°C. As with all antibodies care should be taken to avoid repeated freeze thaw cycles. Antibodies should not be exposed to prolonged high temperatures.

USER NOTES:

When working with antibodies optimal dilutions/concentrations should be determined by the end user for each application. The information provided is a guideline for antibody use. As with all ProSci antibodies, this antibody is for research use only.