

## M6PR Antibody

*Cation-dependent mannose-6-phosphate receptor*

**CATALOG NO.:** XW-7358

**BACKGROUND:**

Chicken polyclonal IgY Antibodies against cation-dependent mannose-6-phosphate receptor. This protein is a receptor for mannose-6-phosphate groups on lysosomal enzymes. The receptor forms a homodimer or homotetramer for intracellular targeting of lysosomal enzymes and export of newly synthesized lysosomal enzymes into the cell secretions. The receptor is an integral membrane protein that localizes to the trans-Golgi reticulum, endosomes, and the plasma membrane.

**TESTED APPLICATION:**

ICC

**SPECIES REACTIVITY:**

H,M,R

**CLONALITY:**

Polyclonal

**HOST:**

Chicken

**IMMUNOGEN:**

60-114

**PROTEIN GI #:**

4505061

**PROTEIN ACCESSION #:**

NP\_002346.1

**PURIFICATION:**

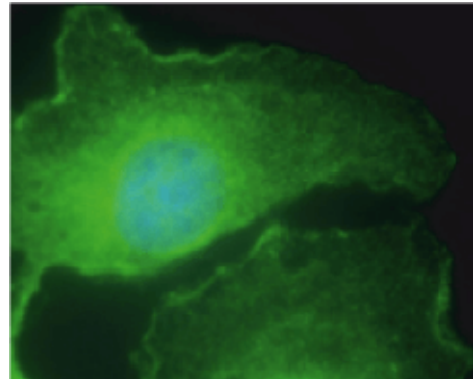
Antigen affinity-purified

**BUFFER:**

Phosphate-Buffered Saline. No preservatives added.

**APPLICATION:**

M6PR IgY antibody can be used for the detection of M6PR by ICC, may also work for IHC.



M6PR IgY Antibody

**STORAGE:**

This antibody can be stored at 4°C for short term (weeks). Long term storage should be at -20°C. As with all antibodies care should be taken to avoid repeated freeze thaw cycles. Antibodies should not be exposed to prolonged high temperatures.

**USER NOTES:**

When working with antibodies optimal dilutions/concentrations should be determined by the end user for each application. The information provided is a guideline for antibody use. As with all ProSci antibodies, this antibody is for research use only.