

CXCL10 Antibody

Small inducible cytokine B10 precursor

CATALOG NO.: XW-7299

BACKGROUND:

CXCL10; small inducible cytokine B10 precursor; interferon-inducible cytokine IP-10 (IP10). CXCL10 encodes the interferon (gamma)-induced protein of 10kDa, a chemokine of the CXC subfamily that is one of the ligands for the receptor CXCR3. The binding of this protein to CXCR3 causes pleiotropic effects, including stimulation of monocytes, natural killer and T-cell migration, and modulation of adhesion molecule expression.

TESTED APPLICATION:

E

SPECIES REACTIVITY:

H,M,R

CLONALITY:

Polyclonal

HOST:

Chicken

IMMUNOGEN:

22-98

PROTEIN GI #:

4504701

PROTEIN ACCESSION #:

NP_001556

PURIFICATION:

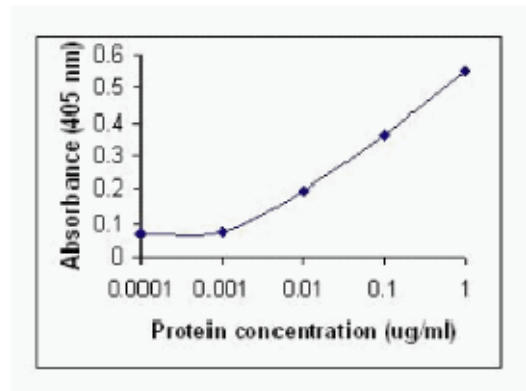
Antigen affinity-purified

BUFFER:

Phosphate-Buffered Saline. No preservatives added.

APPLICATION:

IP10 IgY antibody can be used for the detection of IP10 by ELISA, Western blot.



IP10 IgY Antibody

STORAGE:

This antibody can be stored at 4°C for short term (weeks). Long term storage should be at -20°C. As with all antibodies care should be taken to avoid repeated freeze thaw cycles. Antibodies should not be exposed to prolonged high temperatures.

USER NOTES:

When working with antibodies optimal dilutions/concentrations should be determined by the end user for each application. The information provided is a guideline for antibody use. As with all ProSci antibodies, this antibody is for research use only.