

## GAPDH Antibody

*Glyceraldehyde-3-phosphate dehydrogenase*

**CATALOG NO.:** XW-7214

**BACKGROUND:**

Glyceraldehyde-3-phosphate dehydrogenase [Homo sapiens]. Glyceraldehyde-3-phosphate dehydrogenase catalyzes an important energy-yielding step in carbohydrate metabolism, the reversible oxidative phosphorylation of glyceraldehyde-3-phosphate in the presence of inorganic phosphate and nicotinamide adenine dinucleotide (NAD). The enzyme exists as a tetramer of identical chains. A GAPD pseudogene has been mapped to Xp21-p11 and 15 GAPD-like loci have been identified.

**TESTED APPLICATION:**

WB

**SPECIES REACTIVITY:**

H,M,R

**CLONALITY:**

Polyclonal

**HOST:**

Chicken

**IMMUNOGEN:**

51-290

**PROTEIN GI #:**

7669492

**PROTEIN ACCESSION #:**

NP\_002037.2

**PURIFICATION:**

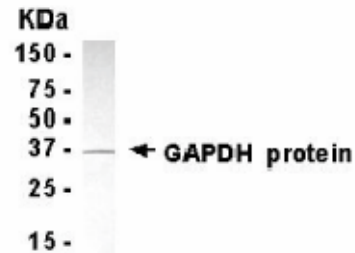
Antigen affinity-purified

**BUFFER:**

Phosphate-Buffered Saline. No preservatives added.

**APPLICATION:**

GAPDH IgY antibody can be used for the detection of GAPDH by Western blot, may also work for IHC and ICC.



GAPDH IgY Antibody

**STORAGE:**

This antibody can be stored at 4°C for short term (weeks). Long term storage should be at -20°C. As with all antibodies care should be taken to avoid repeated freeze thaw cycles. Antibodies should not be exposed to prolonged high temperatures.

**USER NOTES:**

When working with antibodies optimal dilutions/concentrations should be determined by the end user for each application. The information provided is a guideline for antibody use. As with all ProSci antibodies, this antibody is for research use only.