

ACTL6A Antibody

BAF complex 53 kDa subunit

CATALOG NO.: XW-7052

BACKGROUND:

BAF53alpha isoform 1. This protein is a family member of actin-related proteins (ARPs), which share significant amino acid sequence identity to conventional actins. Both actins and ARPs have an actin fold, which is an ATP-binding cleft, as a common feature. The ARPs are involved in diverse cellular processes, including vesicular transport, spindle orientation, nuclear migration and chromatin remodeling. This protein is a 53 kDa subunit of the BAF (BRG1/brm-associated factor) complex in mammals, which is functionally related to SWI/SNF complex in *S. cerevisiae* and *Drosophila*; the latter is thought to facilitate transcriptional activation of specific genes by antagonizing chromatin-mediated transcriptional repression. Together with beta-actin, it is required for maximal ATPase activity of BRG1, and for the association of the BAF complex with chromatin/matrix.

TESTED APPLICATION:

WB

SPECIES REACTIVITY:

H,M and BAF53b

CLONALITY:

Polyclonal

HOST:

Chicken

IMMUNOGEN:

1-429

PROTEIN GI #:

4757718

PROTEIN ACCESSION #:

NP_004292.1

PURIFICATION:

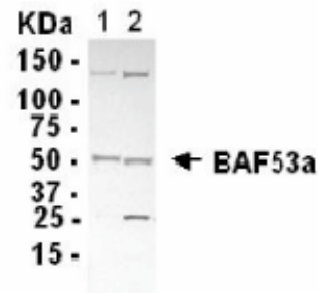
Antigen affinity-purified

BUFFER:

Phosphate-Buffered Saline. No preservatives added.

APPLICATION:

BAF53A IgY antibody can be used for the detection of BAF53A by Western blot, may also work for IHC and ICC.



BAF53A IgY Antibody

STORAGE:

This antibody can be stored at 4°C for short term (weeks). Long term storage should be at -20°C. As with all antibodies care should be taken to avoid repeated freeze thaw cycles. Antibodies should not be exposed to prolonged high temperatures.

USER NOTES:

When working with antibodies optimal dilutions/concentrations should be determined by the end user for each application. The information provided is a guideline for antibody use. As with all ProSci antibodies, this antibody is for research use only.