

AP3B2 Antibody

Adaptor-related protein complex 3, b 2 subunit

CATALOG NO.: XW-7031

BACKGROUND:

Chicken polyclonal IgY Antibodies against Adaptor-related protein complex 3, beta 2 subunit. Neuronal adaptin-like protein, beta-subunit; adaptor-related protein complex 3, beta 2 subunit, This is cellular vesicle coat protein.

TESTED APPLICATION:

WB

SPECIES REACTIVITY:

H

CLONALITY:

Polyclonal

HOST:

Chicken

IMMUNOGEN:

259-350

PROTEIN GI #:

4758760

PROTEIN ACCESSION #:

NP_004635.1

PURIFICATION:

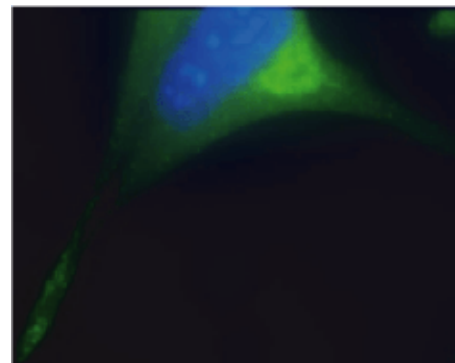
Antigen affinity-purified

BUFFER:

Phosphate-Buffered Saline. No preservatives added.

APPLICATION:

AP3B2 antibody can be used for the detection of AP3B2 by Western blot, may also work for IHC and ICC.



AP3B2 IgY Antibody

STORAGE:

This antibody can be stored at 4°C for short term (weeks). Long term storage should be at -20°C. As with all antibodies care should be taken to avoid repeated freeze thaw cycles. Antibodies should not be exposed to prolonged high temperatures.

USER NOTES:

When working with antibodies optimal dilutions/concentrations should be determined by the end user for each application. The information provided is a guideline for antibody use. As with all ProSci antibodies, this antibody is for research use only.