

AKT1 Antibody

Serine/threonine protein kinase

CATALOG NO.: XW-7019

BACKGROUND:

Serine/threonine protein kinase; Murine thymoma viral (v-akt) oncogene homolog-1. AKT1 is a serine-threonine protein kinase. It is catalytically inactive in serum-starved primary and immortalized fibroblasts. AKT1 and the related AKT2 are activated by platelet-derived growth factor. The activation is rapid and specific, and it is abrogated by mutations in the pleckstrin homology domain of AKT1. It was shown that the activation occurs through phosphatidylinositol 3-kinase. In the developing nervous system AKT is a critical mediator of growth factor-induced neuronal survival. Survival factors can suppress apoptosis in a transcription-independent manner by activating the serine/threonine kinase AKT1, which then phosphorylates and inactivates components of the apoptotic machinery.

TESTED APPLICATION:

WB

SPECIES REACTIVITY:

H,M,R,B X

CLONALITY:

Polyclonal

HOST:

Chicken

IMMUNOGEN:

2-200

PROTEIN GI #:

4885061

PROTEIN ACCESSION #:

NP_005154.1

PURIFICATION:

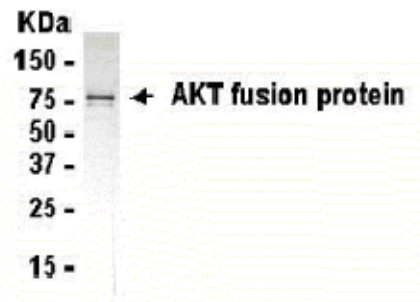
Antigen affinity-purified

BUFFER:

Phosphate-Buffered Saline. No preservatives added.

APPLICATION:

AKT antibody can be used for the detection of AKT by Western blot, may also work for IHC and ICC.



AKT IgY Antibody

STORAGE:

This antibody can be stored at 4°C for short term (weeks). Long term storage should be at -20°C. As with all antibodies care should be taken to avoid repeated freeze thaw cycles. Antibodies should not be exposed to prolonged high temperatures.

USER NOTES:

When working with antibodies optimal dilutions/concentrations should be determined by the end user for each application. The information provided is a guideline for antibody use. As with all ProSci antibodies, this antibody is for research use only.