

AFP Antibody

α-1-fetoprotein

CATALOG NO.: XW-7017

BACKGROUND:

alpha-1-fetoprotein. alpha-fetoprotein is a major plasma protein produced by the yolk sac and the liver during fetal life. alpha-fetoprotein expression in adults is often associated with hepatoma or teratoma. However, hereditary persistence of alpha-fetoprotein may also be found in individuals with no obvious pathology. The protein is thought to be the fetal counterpart of serum albumin, and the alpha-fetoprotein and albumin genes are present in tandem in the same transcriptional orientation on chromosome 4. alpha-fetoprotein is found in monomeric as well as dimeric and trimeric forms, and binds copper, nickel, fatty acids and bilirubin. The level of alpha-fetoprotein in amniotic fluid is used to measure renal loss of protein to screen for spina bifida and anencephaly.

TESTED APPLICATION:

WB

SPECIES REACTIVITY:

H

CLONALITY:

Polyclonal

HOST:

Chicken

IMMUNOGEN:

180-420

PROTEIN GI #:

4501989

PROTEIN ACCESSION #:

NP_001125.1

PURIFICATION:

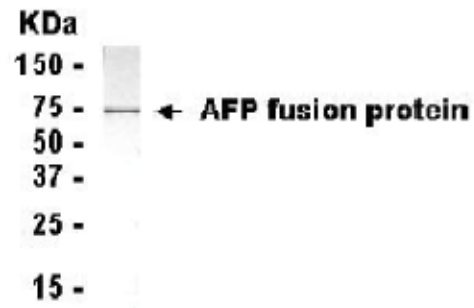
Antigen affinity-purified

BUFFER:

Phosphate-Buffered Saline. No preservatives added.

APPLICATION:

AFP antibody can be used for the detection of AFP by Western blot, may also work for IHC and ICC.



AFP IgY Antibody

STORAGE:

This antibody can be stored at 4°C for short term (weeks). Long term storage should be at -20°C. As with all antibodies care should be taken to avoid repeated freeze thaw cycles. Antibodies should not be exposed to prolonged high temperatures.

USER NOTES:

When working with antibodies optimal dilutions/concentrations should be determined by the end user for each application. The information provided is a guideline for antibody use. As with all ProSci antibodies, this antibody is for research use only.