

SERPINA1 Antibody

a-1 antitrypsin

CATALOG NO.: XW-7000

BACKGROUND:

Chicken polyclonal IgY Antibodies against alpha-1 antitrypsin (SERPINA 7), antigen affinity-purified. A single polypeptide chain of 394 amino acids and three carbohydrate side chains linked to asparagine residues. This is a serine protease inhibitor that also acts as a major physiological regulator of elastase. Deficiency of this protein is associated with emphysema and liver disease. M.W. 52,000.

TESTED APPLICATION:

E, WB

SPECIES REACTIVITY:

H, M, R

CLONALITY:

Polyclonal

HOST:

Chicken

IMMUNOGEN:

Full Length

PROTEIN GI #:

4505793

PROTEIN ACCESSION #:

NP_000286

PURIFICATION:

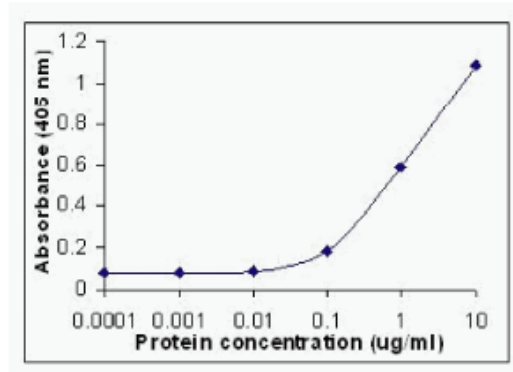
Antigen affinity-purified

BUFFER:

Phosphate-Buffered Saline. No preservatives added.

APPLICATION:

SERPINA1 antibody can be used for the detection of a-1-Antitrypsin by Western blot, ELISA, IP, may also work for IHC and ICC.



Direct ELISA: Recombinant protein as test antigen.

Affinity-purified IgY as primary antibody (0.1 µg/ml), and

Rabbit anti-IgY-HRP as 2nd antibody.

STORAGE:

This antibody can be stored at 4°C for short term (weeks). Long term storage should be at -20°C. As with all antibodies care should be taken to avoid repeated freeze thaw cycles. Antibodies should not be exposed to prolonged high temperatures.

USER NOTES:

When working with antibodies optimal dilutions/concentrations should be determined by the end user for each application. The information provided is a guideline for antibody use. As with all ProSci antibodies, this antibody is for research use only.