

## KCNE2 intracellular domain Antibody

*Chicken Anti-KCNE2\_intra protein from human chromosome 21.*

**CATALOG NO.:** XG-6165

**DESCRIPTION:**

Chicken Anti-KCNE2 intra protein from human chromosome 21.

**CLONALITY:**

Polyclonal

**HOST:**

Chicken

**IMMUNOGEN:**

Purified KCNE2\_intra recombinant protein (12KD).

**TESTED APPLICATION:**

Western blot

**SPECIES REACTIVITY:**

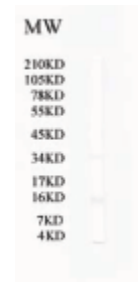
Human

**STORAGE:**

2-8°C for one week and -20°C as an undiluted liquid for up to two years.

**USER NOTES:**

Optimal dilutions/concentrations should be determined by the end user. The information provided is a guideline for product use. **This product is for research use only.**



KCNE2 intracellular domain Antibody