

Anti- SMAD6 – Antibody

HGNC: 6772, HsT17432, MADH6, MADH7

CATALOG NO.: XAV-8521

SPECIES REACTIVITY: Human

SIZE: 53 kDa

BACKGROUND:

Antagonist of signaling by TGF- β (transforming growth factor) type 1 receptor superfamily members; has been shown to inhibit selectively BMP (bone morphogenetic proteins) signaling by competing with the co-SMAD SMAD4 for receptor-activated SMAD1. SMAD6 is an inhibitory SMAD (I-SMAD) or antagonistic SMAD.

SOURCE:

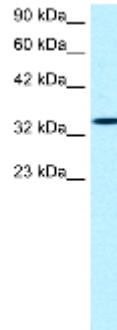
Anti- SMAD6 polyclonal antibody produced in rabbits immunized with synthetic peptide corresponding peptide with internal ID P03704 of human MADH6. Rabbit total Ig G.

APPLICATION:

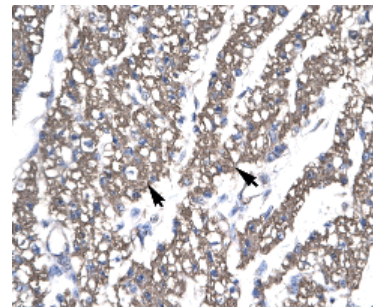
This polyclonal antibody can be used for the detection of synthetic peptide corresponding peptide with internal ID P03704 of human MADH6 by Immunoblot and Immunohistochemistry; Western blot at a suggested dilution at 0.5-1.0 μ g/ml in 5% skim milk / PBS buffer, and HRP conjugated anti-Rabbit IgG should be diluted in 1: 50,000 - 100,052 as second antibody. Suggested starting concentrations are provided. Optimal dilutions should be determined by end-user. Differences in calculated versus apparent molecular weight may be due to post-translational modifications or protein hydrophobicity. **This product is for research use only.**

STORAGE:

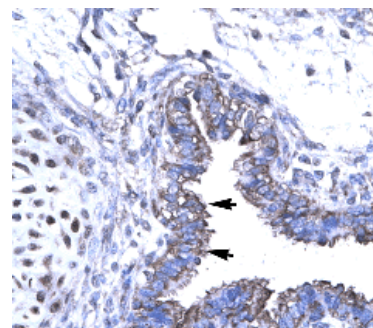
SMAD6 antibody is supplied in PBS buffer containing 0.02% sodium azide. For longer periods of storage, store at -20°C. Avoid repeat freeze-thaw cycle.



Western blot analysis of SMAD6 in Jurkat cell lysate using anti-SMAD6 (Catalog No. XAV-8521).



Immunohistochemistry of SMAD6 in human heart paraffin embedded tissue using anti- SMAD6 (Catalog No. XAV-8521) at 4.0-8.0 μ g/ml.



Immunohistochemistry of SMAD6 in human lung paraffin embedded tissue using anti- SMAD6 (Catalog No. XAV-8521) at 4.0-8.0 μ g/ml.

REFERENCES:

Tsunobuchi, H., et al., (2004) Biophys. Res. Commun. 316(3), 712-719

12170 Flint Place
Poway, CA 92064
www.prosci-inc.com



Toll Free: 888-513-9525
Tel: 858-513-2638
Fax: 858-513-2692
techsupport@prosci-inc.com
