

Anti- APPD - Antibody

CATALOG NO.: XAV-8439

SPECIES REACTIVITY: Human

SIZE: 279 amino acids; 30 kDa

BACKGROUND:

APPD (Apoptosis-inducing protein D; phafin 1) is predicted through gene annotation and contains pleckstrin homology domain. It may binds to two Zn⁺⁺ ions through its FYVE zinc finger domain. Biological function of this protein has not been clearly mapped yet.

SOURCE:

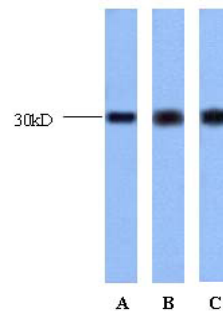
Anti- APPD polyclonal antibody produced in rabbits immunized with a synthetic KLH-conjugated peptide corresponding to the amino acid residue 243-257 of APPD of human origin. Rabbit Ig G is purified by Protein G/A affinity chromatography method.

APPLICATION:

This polyclonal antibody can be used for the detection of synthetic KLH-conjugated peptide corresponding to the amino acid residue 243-257 of APPD of human origin by Western blot at a Suggested dilution at 1 µg/ml in 5% skim milk / PBS buffer, and HRP conjugated anti-Rabbit IgG should be diluted in 1: 50,000 - 100,000 as second antibody. **This product is for research use only.**

STORAGE:

APPD antibody is supplied in PBS buffer containing 0.02% sodium azide. For longer periods of storage, store at -20°C. Avoid repeat freeze-thaw cycle.



Western blot analysis of APPD expression in HepG2(A), Raji (B), 293T(C) cell lysates using anti-APPD (Cat. No. XAV-8439).

REFERENCES:

Strausberg, R.L., et al, 2002, Proc. Natl. Acad. Sci. U.S.A. 99: 16899-16903