

Anti- Amphetamine-Antibody

CATALOG NO.: XAV-8423

SPECIES REACTIVITY: N/A

CLONE: 6F2

BACKGROUND:

Amphetamine (AMPH) is a potent central nervous system (CNS) stimulant with additional peripheral sympathomimetic effects. AMPH has been used clinically in the treatment of obesity, minimal brain dysfunction, narcolepsy, depression and to counter fatigue and are also subjected to widespread abuse. Following the acute administration of the AMPHs there is an increase in blood pressure, heart rate, respiration, sweating and tremor. The behavioral manifestations include species specific stereotypic behavior, anorexia, sleeplessness, hyperexcitability, and hyperactivity. AMPH is an indirect agonist, causing the release of newly synthesized norepinephrine and dopamine and blocking the reuptake of these transmitters from the synapse, resulting to an increase in the concentration of catecholamines in the synapse as well as an overall increase in catecholaminergic activity in the brain.

SOURCE:

Anti-Amphetamine mouse monoclonal antibody (6F2) was made against a BSA-amphetamine conjugate. Mouse IgG₁ is purified by ammonium sulfate precipitation.

APPLICATION:

This mouse monoclonal antibody (6F2) can be used for the detection of Amphetamine in ELISA assays at a 1:1000 dilution with HRP detection systems. Suggested starting concentrations are provided. Optimal dilutions should be determined by end-user. Differences in calculated versus apparent molecular weight may be due

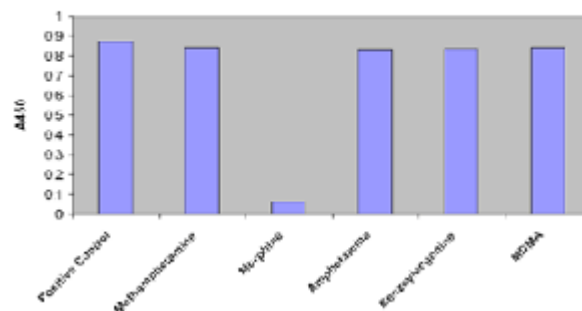
to post-translational modifications or protein hydrophobicity. **This product is for research use only.**

STORAGE:

Amphetamine antibody is supplied in PBS buffer containing 0.02% sodium azide. For longer periods of storage, store at -20°C. Avoid repeat freeze-thaw cycle.

Applications and Examples:

Inhibition of Antigen-Anti-Morphine Antibody Interactions by Different Drugs



A competitive ELISA was performed using various drugs at a concentration of 10 ng/ml. Only amphetamine was able to block the binding of the antibody to the antigen.

REFERENCES:

Bowyer, J. F., et al., 2004, Neurotoxicology 25(4), 555-72;
Iwata, S, et al., 1997, Synapse 26(3),281-91

12170 Flint Place
Poway, CA 92064
www.prosci-inc.com



Toll Free: 888-513-9525
Tel: 858-513-2638
Fax: 858-513-2692
techsupport@prosci-inc.com
