

## Anti- E2F1 Antibody

**CATALOG NO.:** XAV-8308

**SPECIES REACTIVITY:** Human

**SIZE:** 437 amino acids; 47 kDa

### BACKGROUND:

The protein encoded by this gene is a member of the E2F family of transcription factors. The E2F family plays a crucial role in the control of cell cycle and action of tumor suppressor proteins and is also a target of the transforming proteins of small DNA tumor viruses. The E2F proteins contain several evolutionally conserved domains found in most members of the family. These domains include a DNA binding domain, a dimerization domain which determines interaction with the differentiation regulated transcription factor proteins (DP), a transactivation domain enriched in acidic amino acids, and a tumor suppressor protein association domain which is embedded within the transactivation domain. This protein and another 2 members, E2F2 and E2F3, have an additional cyclin binding domain. This protein binds preferentially to retinoblastoma protein pRB in a cell-cycle dependent manner. It can mediate both cell proliferation and p53-dependent/independent apoptosis.

### SOURCE:

Anti- E2F1 polyclonal antibody produced in rabbits immunized with a synthetic KLH-conjugated peptide corresponding to the amino acid residue 310-323 of E2F1 of human origin. Rabbit Ig G is purified by Protein G/A affinity chromatography method.

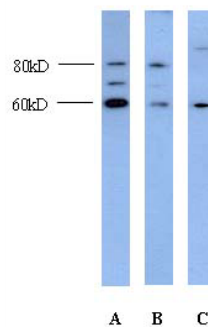
### APPLICATION:

This polyclonal antibody can be used for the detection of synthetic KLH-conjugated peptide corresponding to the amino acid residue 310-323 of E2F1 of human origin by Western blot at a Suggested dilution at 1 µg/ml in 5% skim

milk / PBS buffer, and HRP conjugated anti-Rabbit IgG should be diluted in 1: 50,000 - 100,000 as second antibody. **This product is for research use only.**

### STORAGE:

E2F1 antibody is supplied in PBS buffer containing 0.02% sodium azide. For longer periods of storage, store at -20°C. Avoid repeat freeze-thaw cycle.



Western blot analysis of E2F1 expression in Jurkat (A), HepG2 (B), and Raji (C) cell lysates using anti-E2F1 (Cat. No. XAV-8308).

### REFERENCES:

Araki, K., et al, 2003, Oncogene 22 (48): 7632-7641