

## Anti- Tel Antibody

**CATALOG NO.:** XAV-8303

**SPECIES REACTIVITY:** Human

**SIZE:** 452 amino acids; 50 kDa

### BACKGROUND:

Tel encodes an ETS family transcription factor. The product of this gene contains two functional domains: a N-terminal pointed (PNT) domain that is involved in the protein-protein interactions with itself and other proteins, and a C-terminal DNA-binding domain. Gene knockout studies in mice suggest that it is required for hematopoiesis and maintenance of the developing vascular network. This gene is known to be involved in a large number of chromosomal rearrangements associated with leukemia and congenital fibrosarcoma.

### SOURCE:

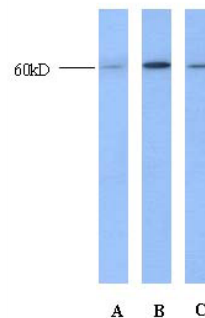
Anti- Tel polyclonal antibody produced in rabbits immunized with a synthetic KLH-conjugated peptide corresponding to the amino acid residue 350-363 of Tel of human origin. Rabbit Ig G is purified by Protein G/A affinity chromatography method.

### APPLICATION:

This polyclonal antibody can be used for the detection of synthetic KLH-conjugated peptide corresponding to the amino acid residue 350-363 of Tel of human origin by Western blot at a Suggested dilution at 1 µg/ml in 5% skim milk / PBS buffer, and HRP conjugated anti-Rabbit IgG should be diluted in 1: 50,000 - 100,000 as second antibody. **This product is for research use only.**

### STORAGE:

Tel antibody is supplied in PBS buffer containing 0.02% sodium azide. For longer periods of storage, store at -20°C. Avoid repeat freeze-thaw cycle.



Western blot analysis of Tel expression in HepG2 (A), Raji (B) and 293T (C) cell lysates using anti- Tel (**Cat. No. XAV-8303**).

### REFERENCES:

Lopez, R.G., et al, 2003, J. Biol. Chem. 278 (42): 41316-41325